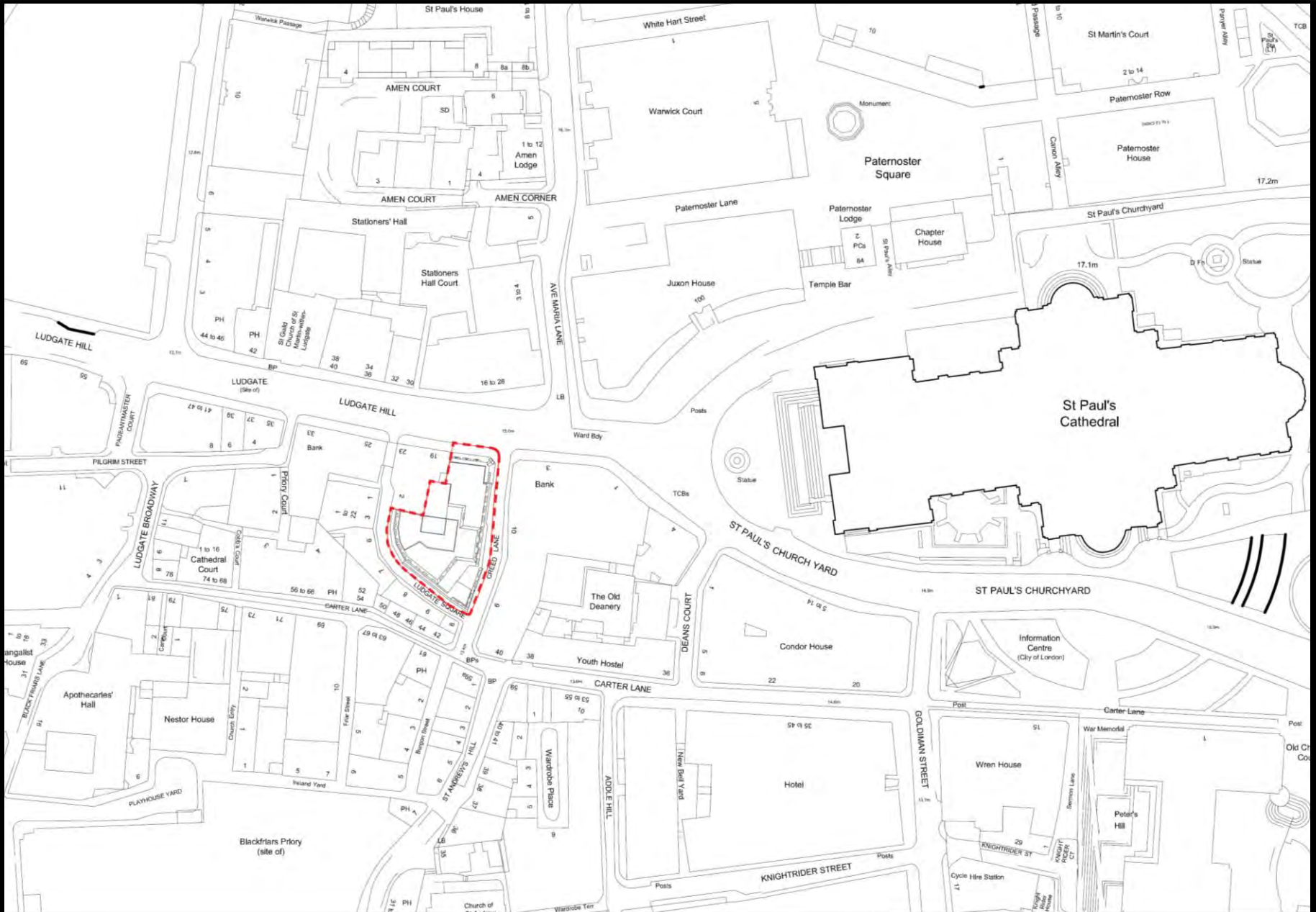


# Planning & Transportation Committee

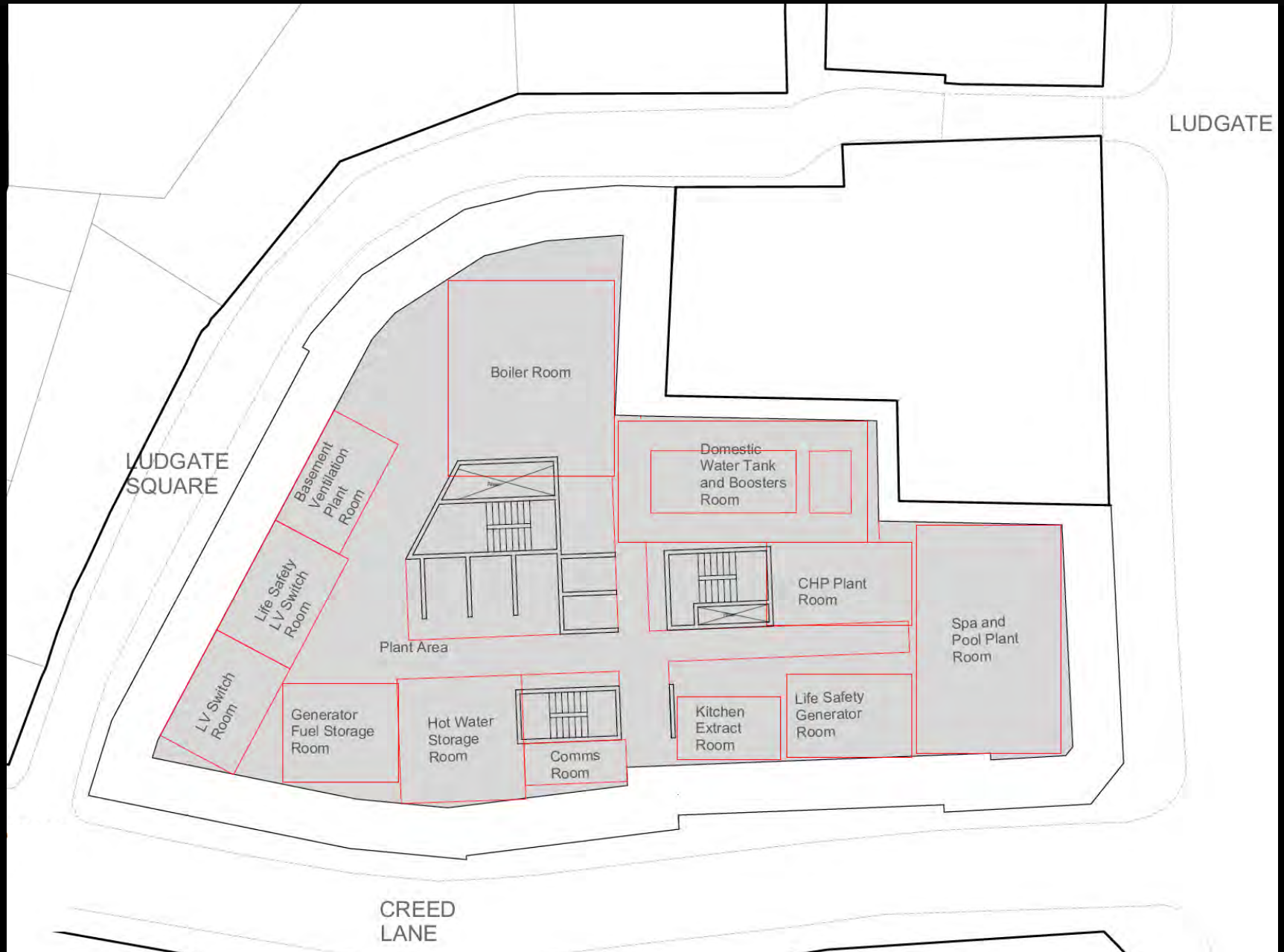
8<sup>th</sup> October 2018

# Creed Court Hotel



Site location plan

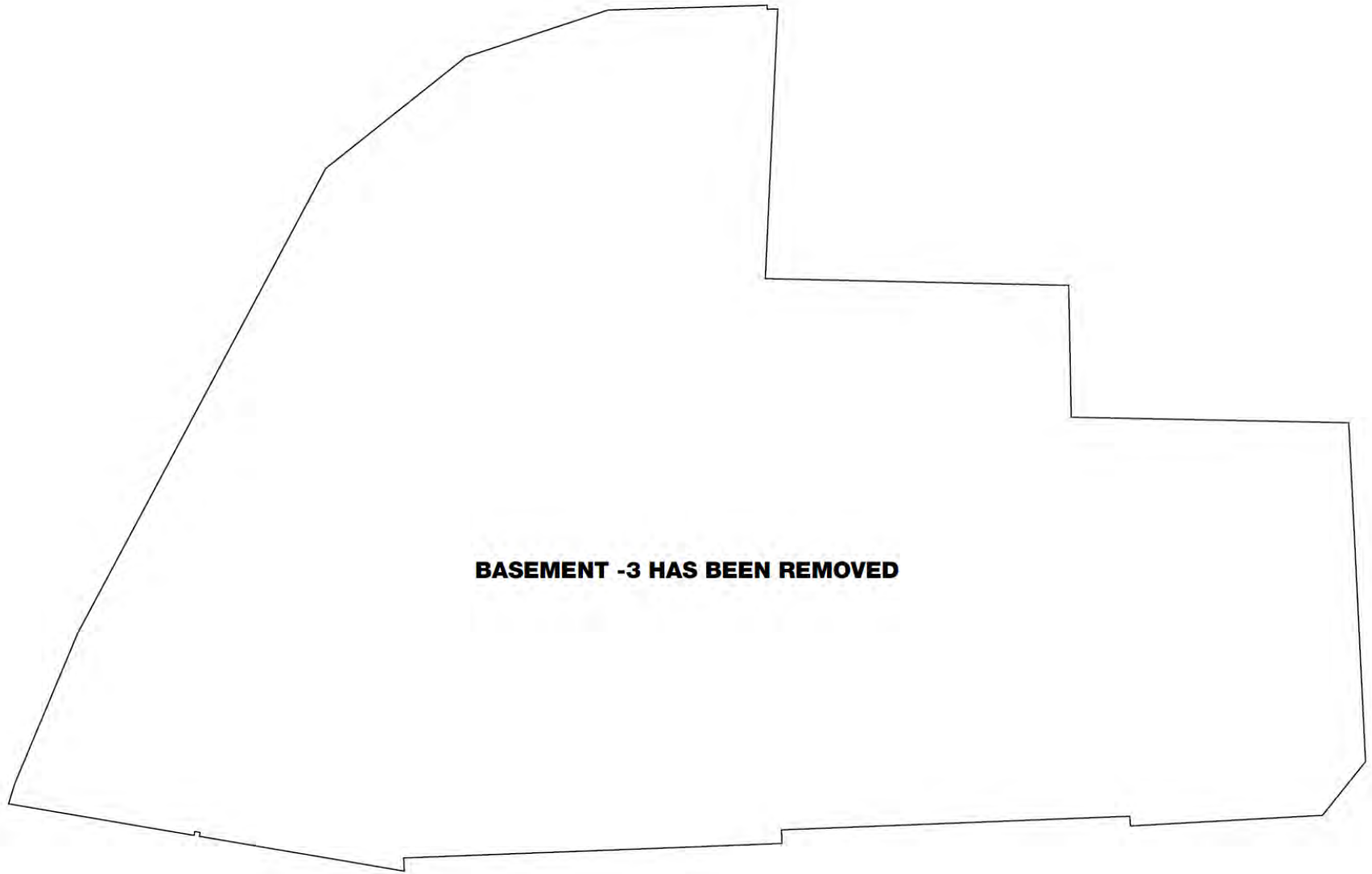
# Creed Court Hotel



Consented lower ground floor - Level -3

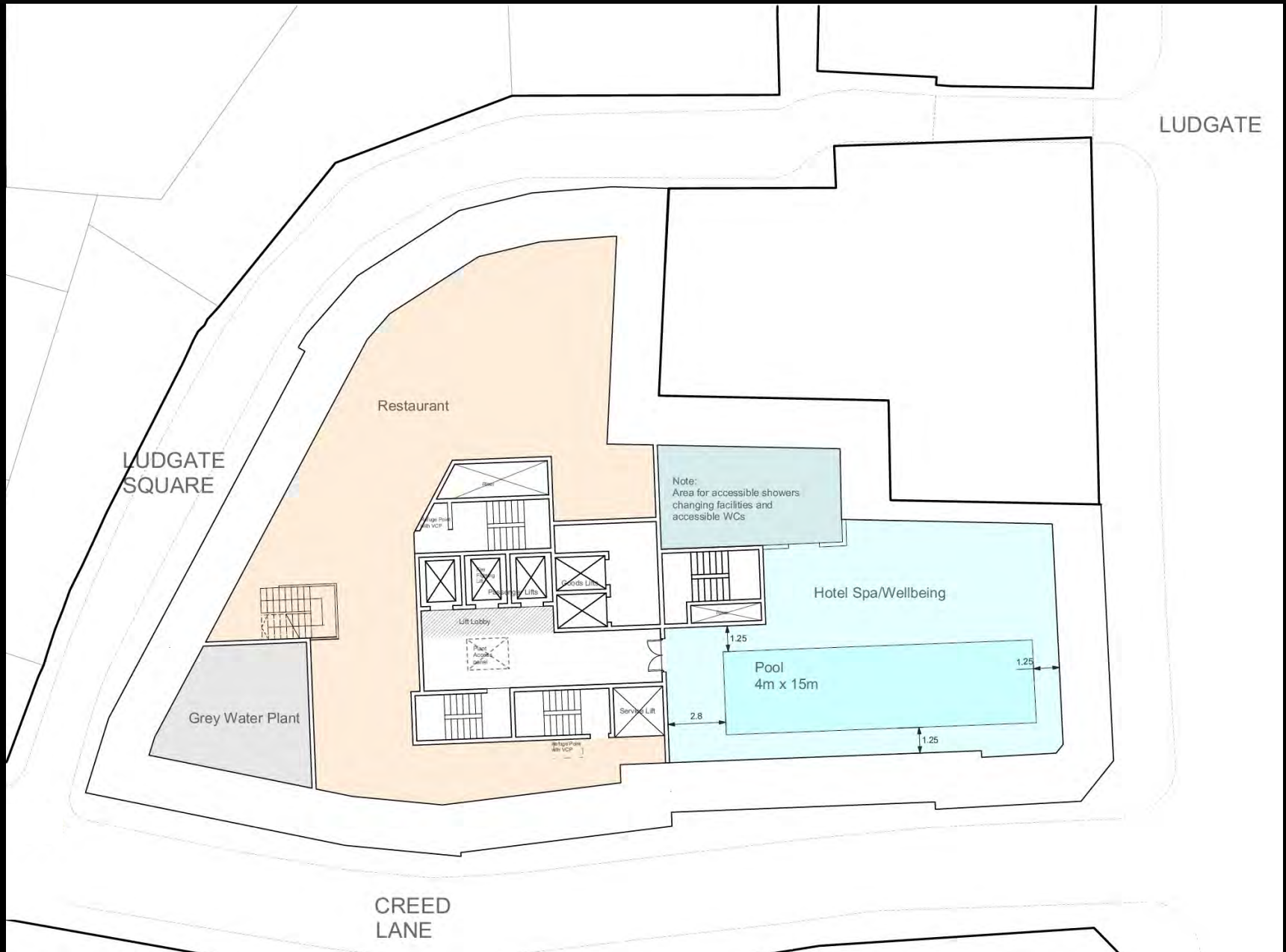


# Creed Court Hotel



Proposed basement - Level -3

# Creed Court Hotel



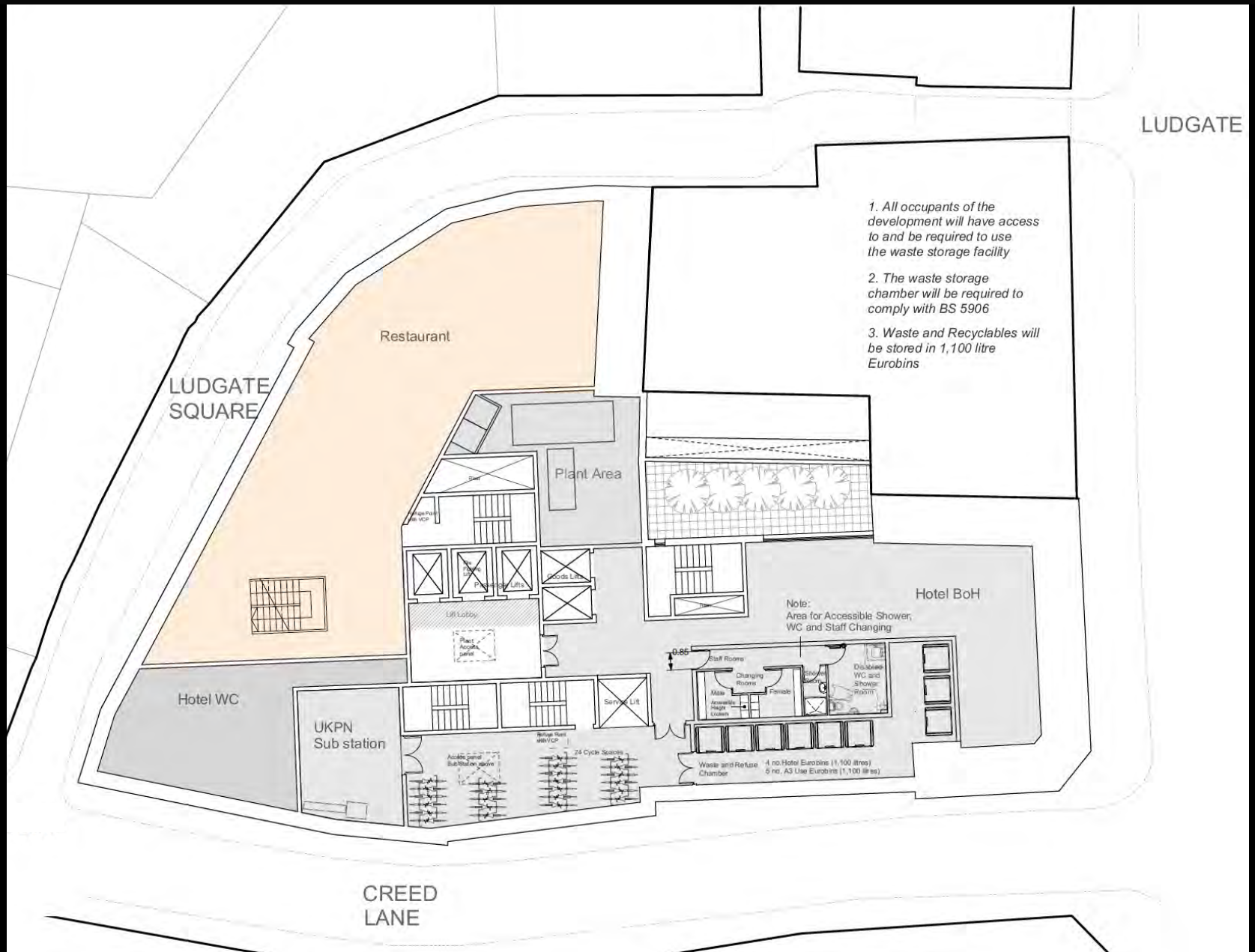
Consented lower ground floor - Level -2

# Creed Court Hotel



Proposed basement - Level -2

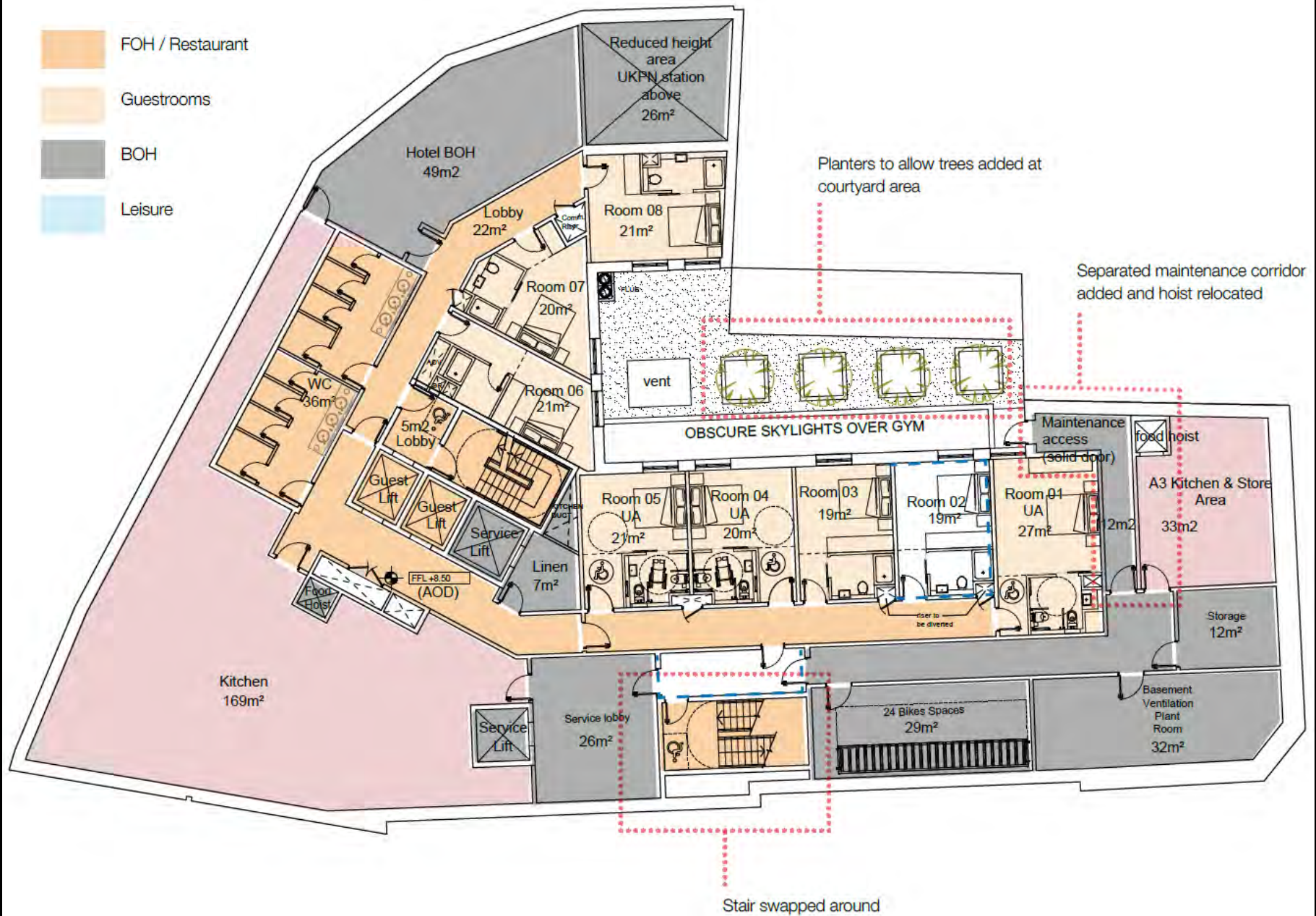
# Creed Court Hotel



Consented lower ground floor – Level -1



# Creed Court Hotel



Proposed basement - Level -1



## Consented ground floor





**Legend:**

- A3 / Cafe
- FOH / Restaurant
- Guestrooms
- BOH
- Leisure

**Key Features and Rooms:**

- A3 Restaurant & Bar:** 201m²
- Lounge:** 91m²
- Office:** 24m²
- Reception:** 15.00
- Room 01:** 20m²
- Room 02:** 21m²
- Room 03:** 25m²
- Room 04:** 21m²
- Room 05:** 29m²
- Room 06:** 21m²
- UKPN Sub Station & LV switch room:** 26m²
- BOH Entrance:** 33m²
- Store:** 14m²
- 6# waste refuse chamber:** 20m²
- Guest Lift Lobby:** 17m²
- 10m2 Lobby:** 10m²
- Service Lift:** 6m²
- Front House corridor:** 1:12
- Landscaped courtyard with Skylights to leisure below**
- Ramp 1:12** (multiple locations)
- Stair swapped around and shopfront doors revived**

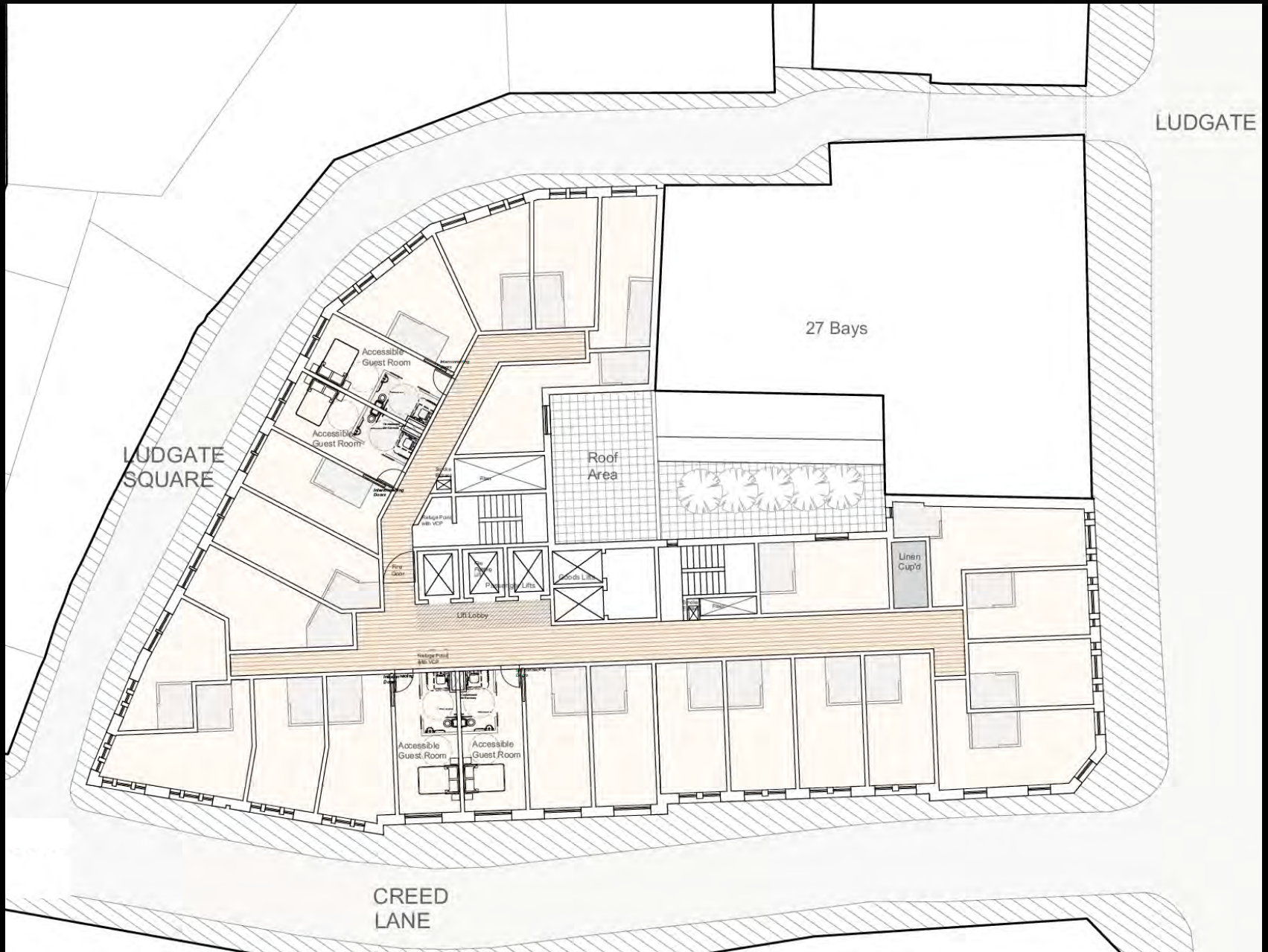
**Dimensions and Elevations:**

- Room 01: 20m²
- Room 02: 21m²
- Room 03: 25m²
- Room 04: 21m²
- Room 05: 29m²
- Room 06: 21m²
- UKPN Sub Station & LV switch room: 26m²
- BOH Entrance: 33m²
- Store: 14m²
- 6# waste refuse chamber: 20m²
- Guest Lift Lobby: 17m²
- 10m2 Lobby: 10m²
- Service Lift: 6m²
- Front House corridor: 1:12
- Landscaped courtyard with Skylights to leisure below
- Ramp 1:12
- Stair swapped around and shopfront doors revived

poor

## Proposed ground floor

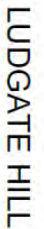
# Creed Court Hotel



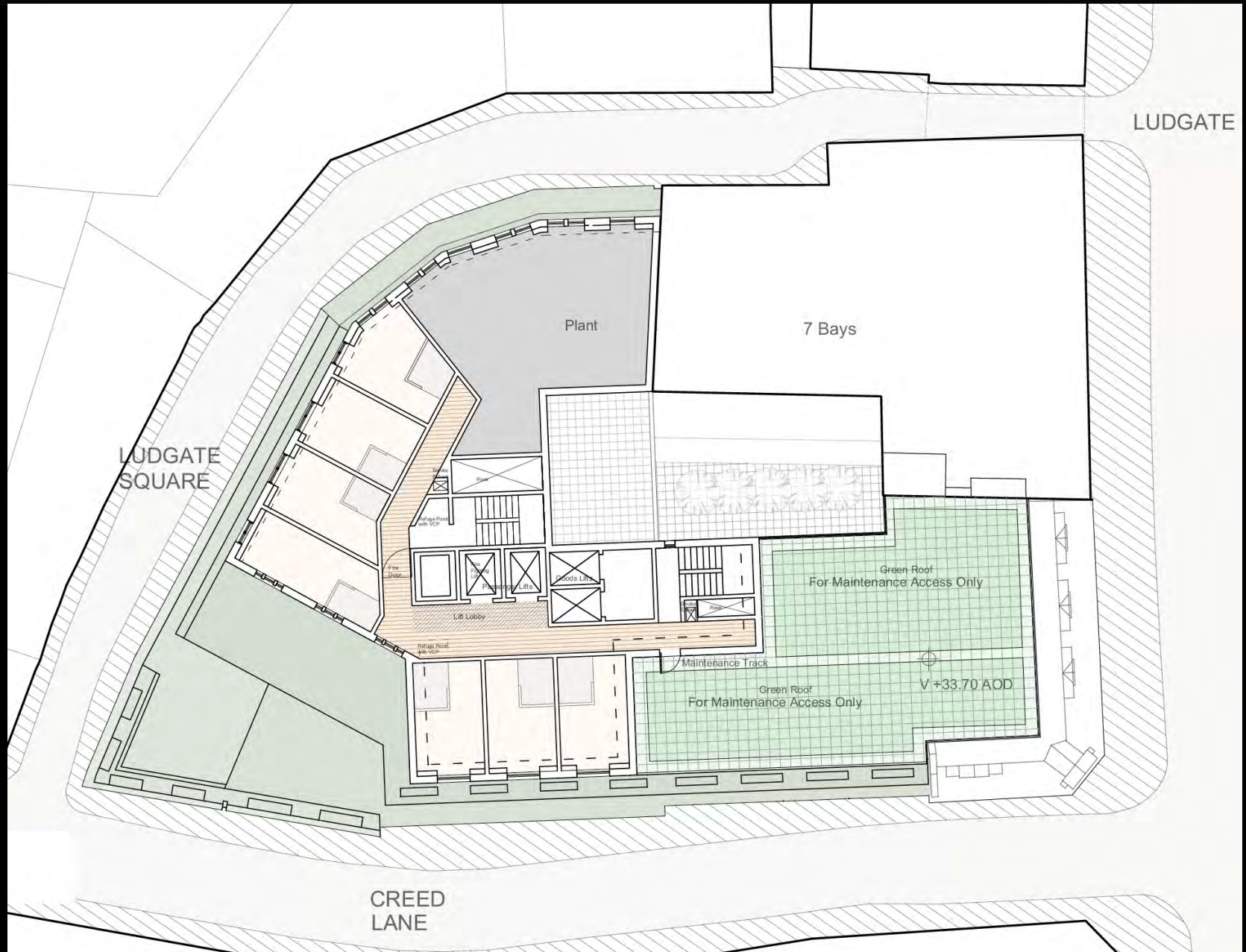
Consented first floor



## Proposed first floor



# Creed Court Hotel

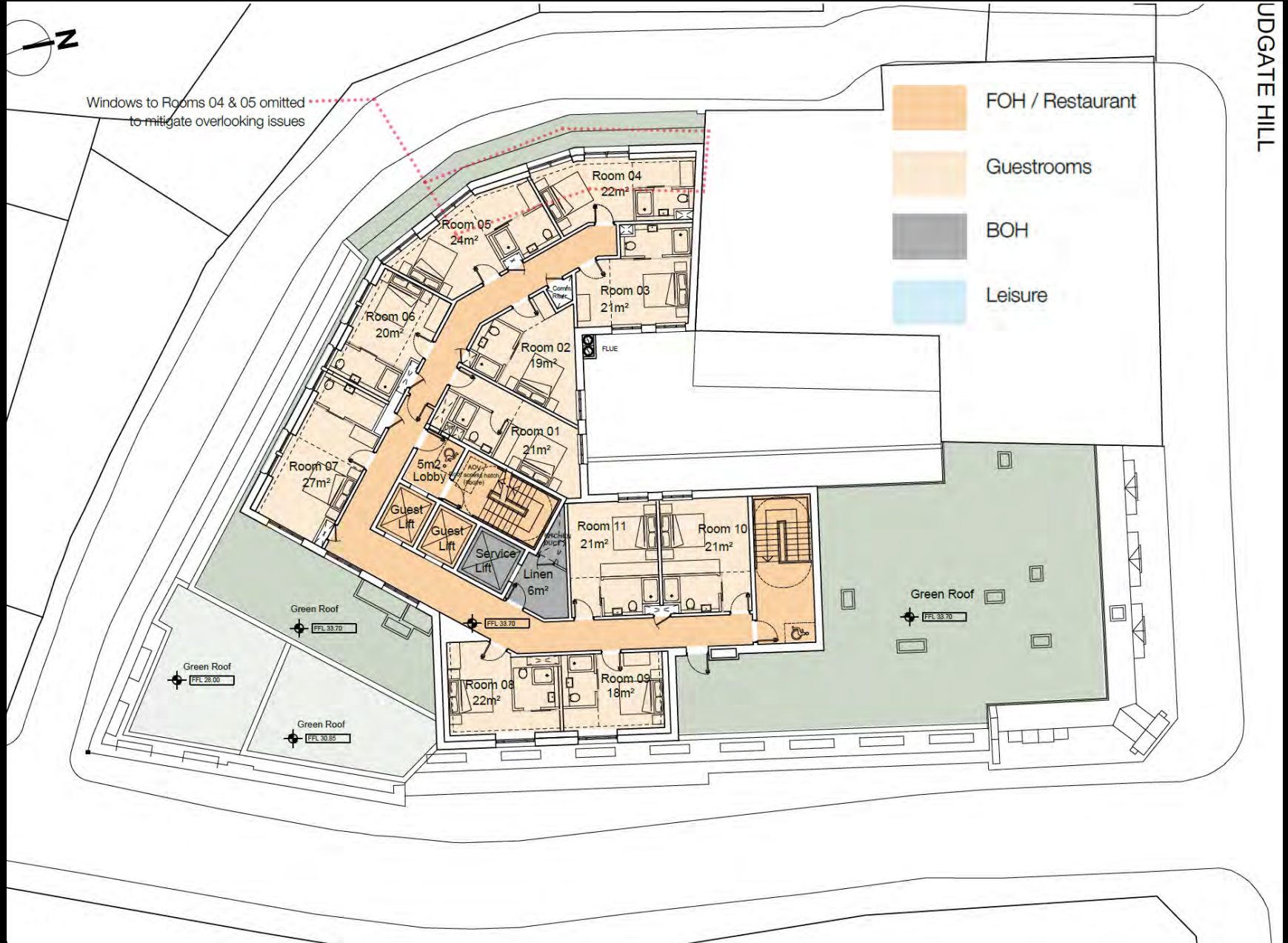


Consented sixth floor



# Creed Court Hotel

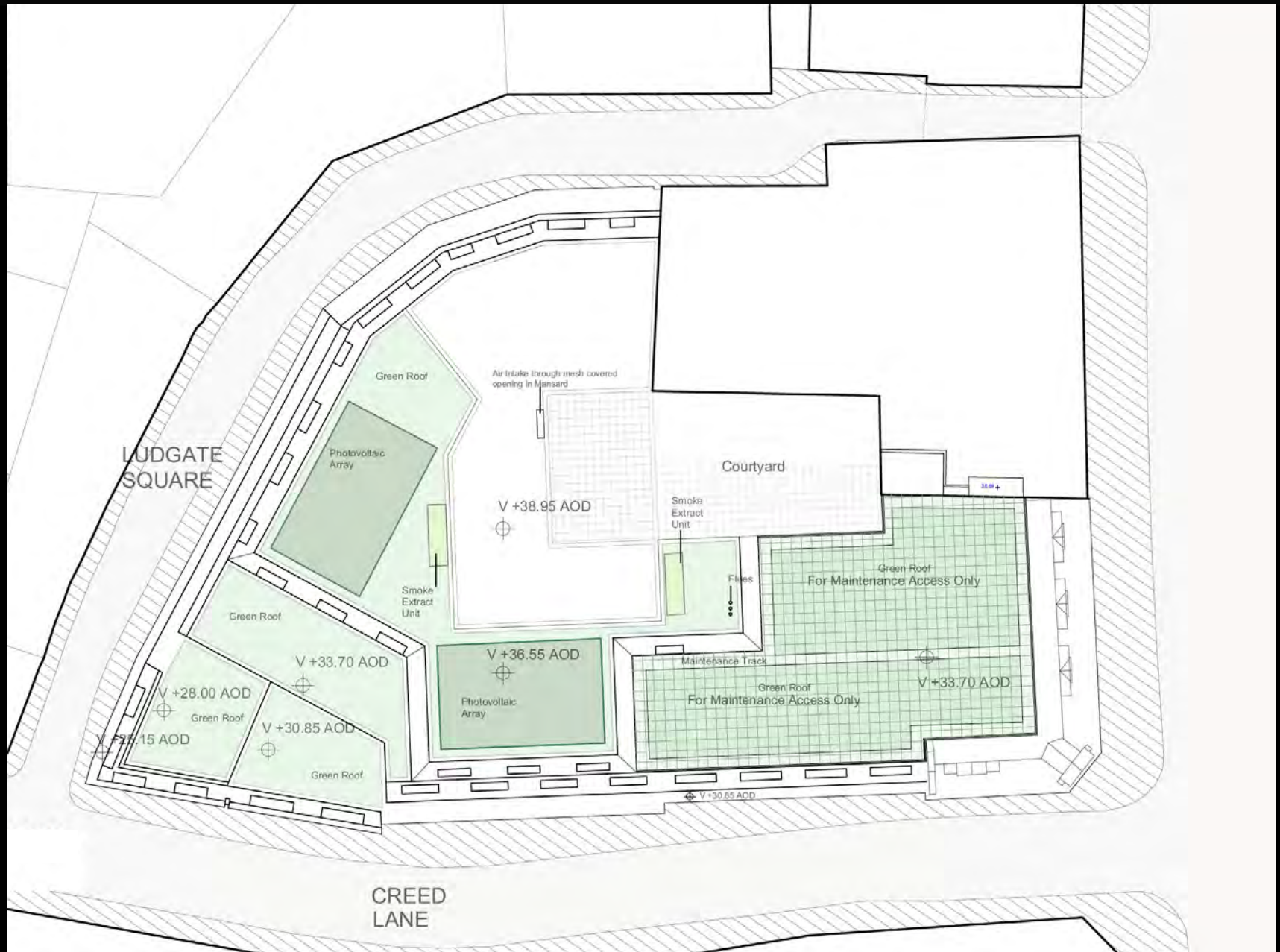
UDGATE HILL



Proposed sixth floor



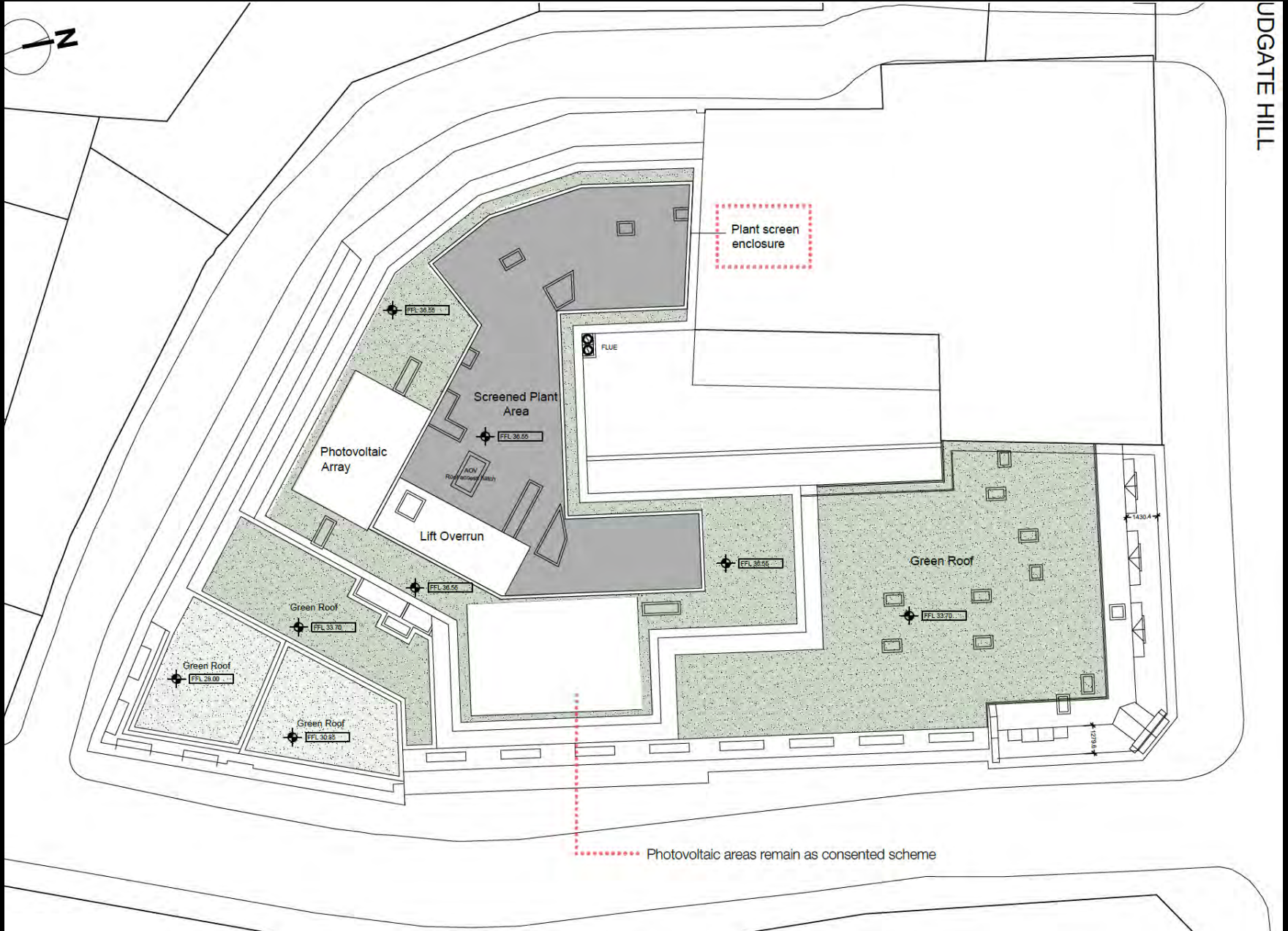
# Creed Court Hotel



Consented roof plan

# Creed Court Hotel

UDGATE HILL



Proposed roof plan



# Creed Court Hotel



Consented Creed Lane elevation



# Creed Court Hotel



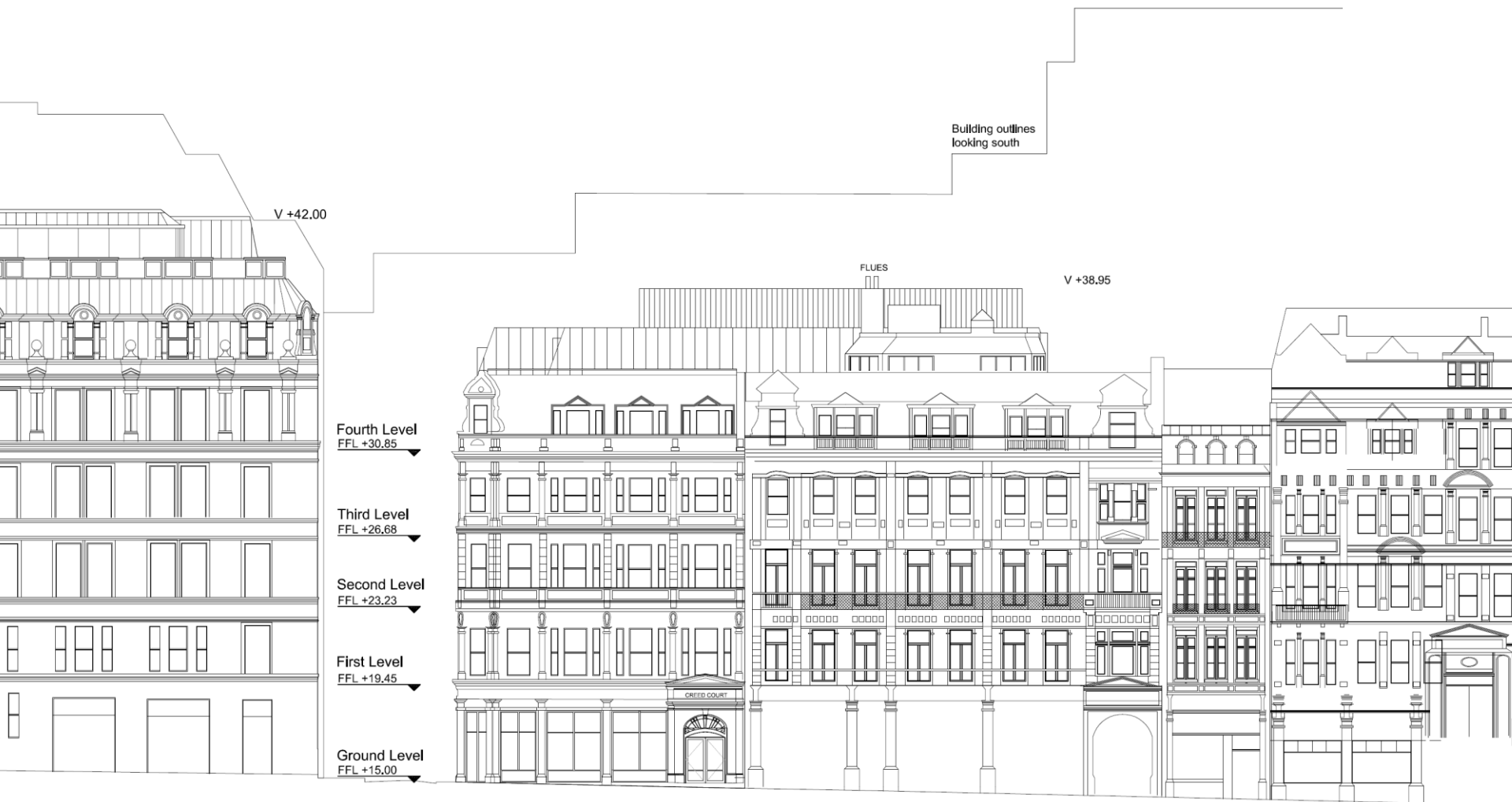
Proposed Creed Lane elevation

# Creed Court Hotel



Consented Ludgate Hill elevation

# Creed Court Hotel



Proposed Ludgate Hill elevation



# Creed Court Hotel



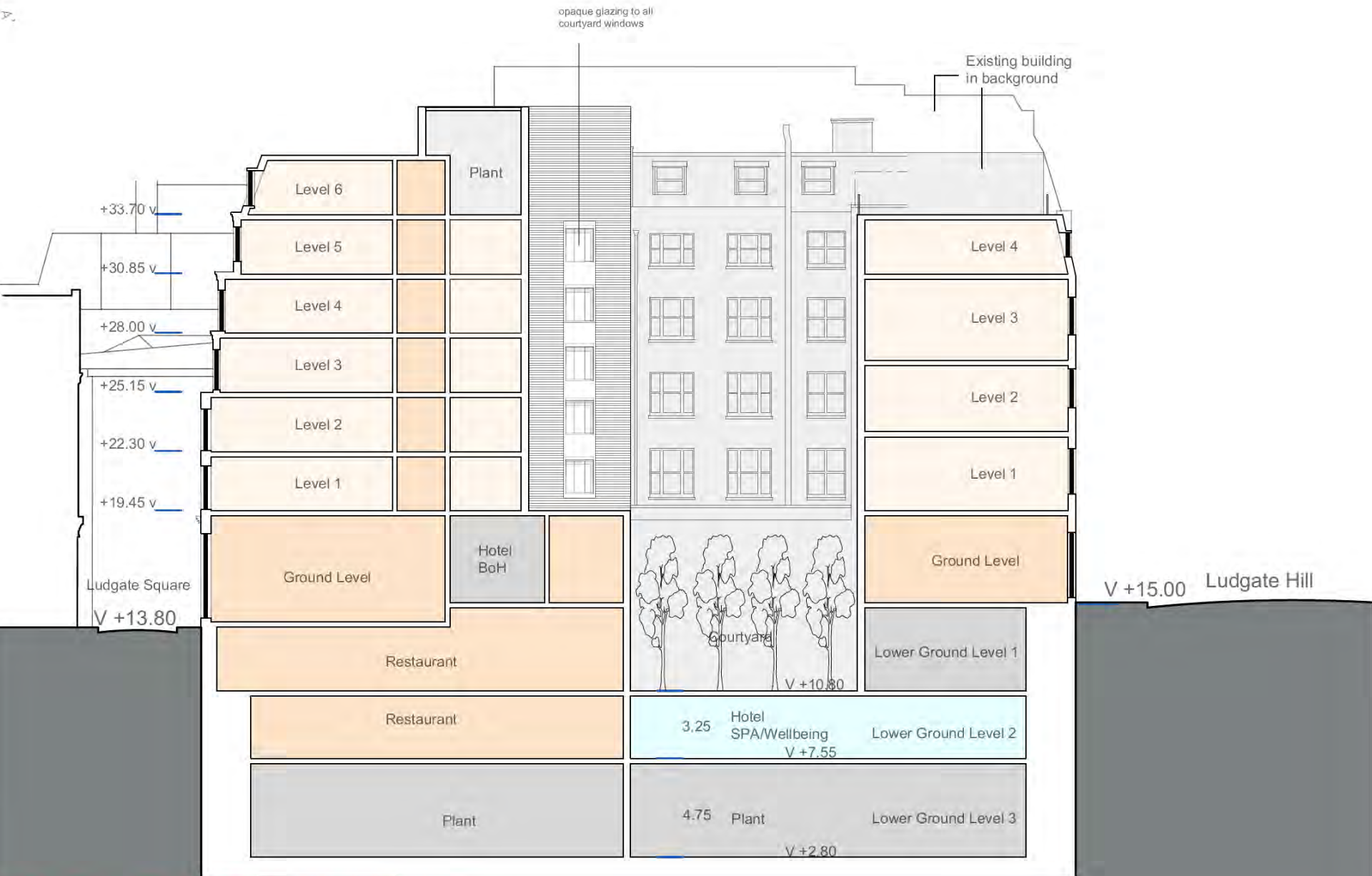
Consented Ludgate Square elevation

# Creed Court Hotel



Proposed Ludgate Square elevation

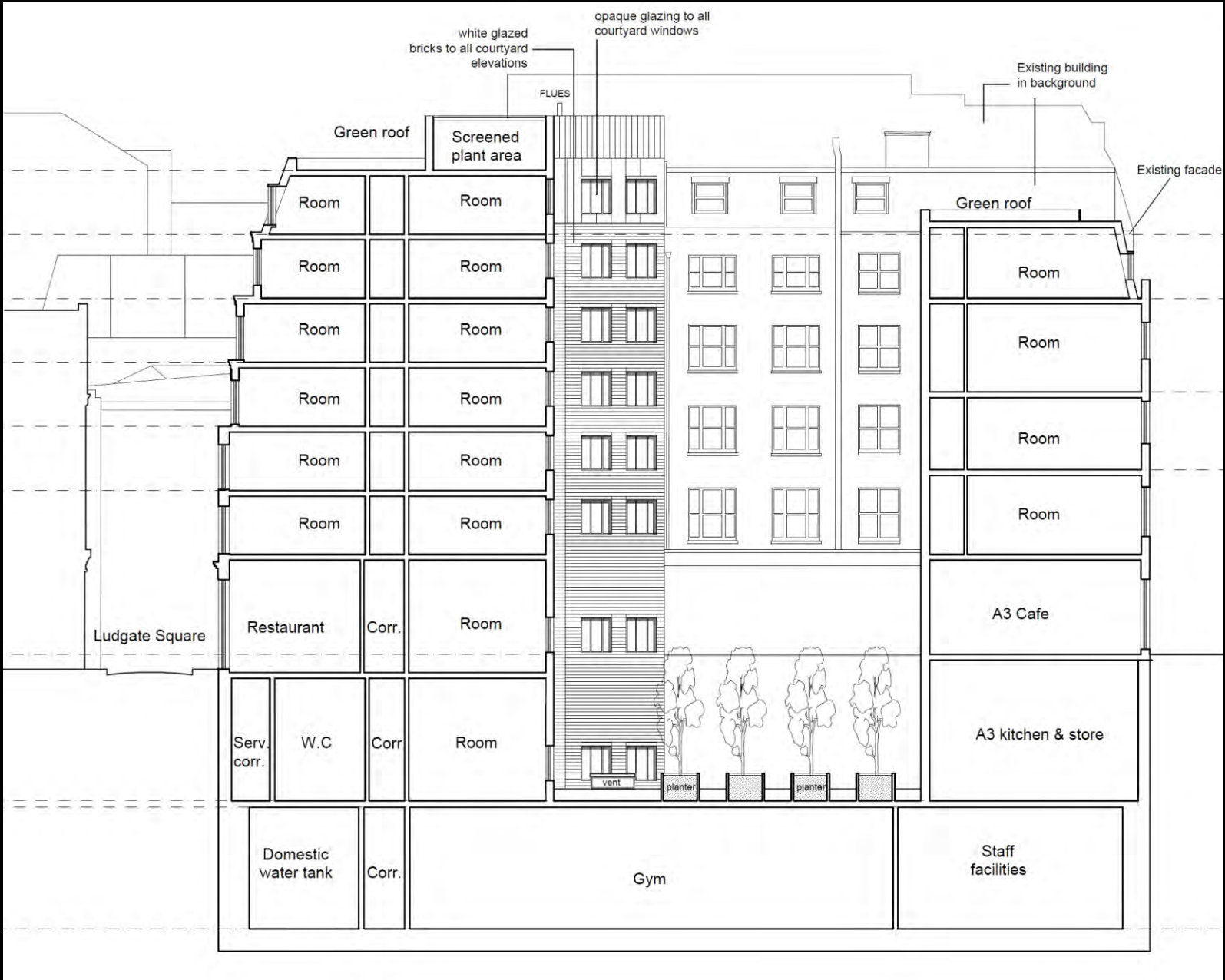
# Creed Court Hotel



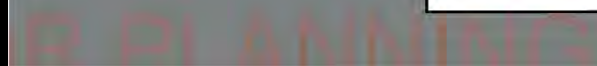
Consented section A-A



## Proposed section A-A

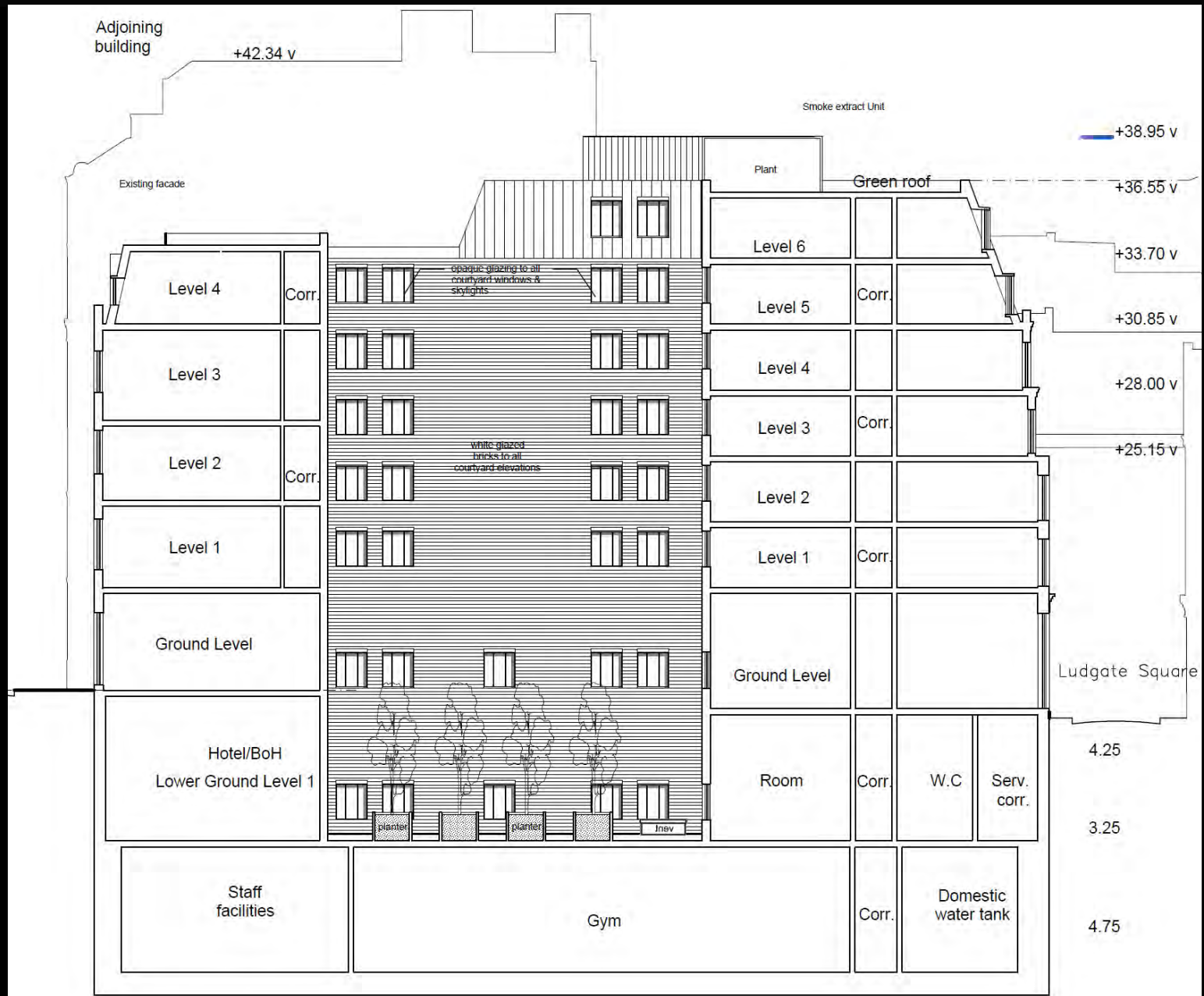


2



Consented section B-B

# Creed Court Hotel



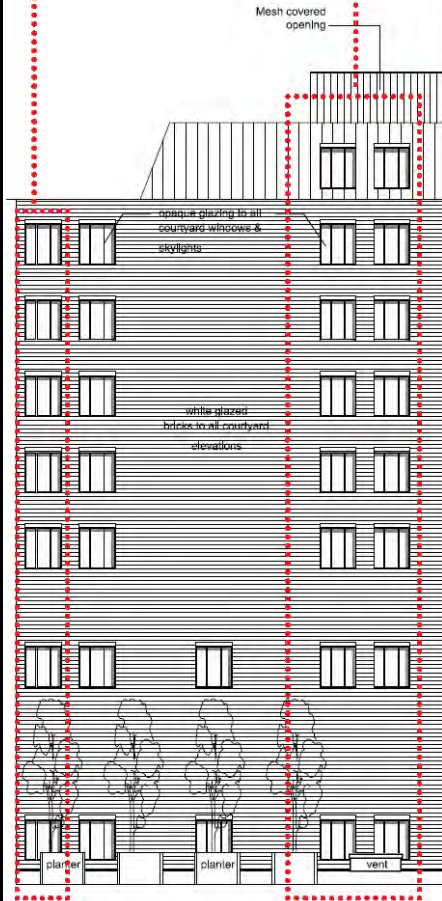
DMA Proposed section B-B



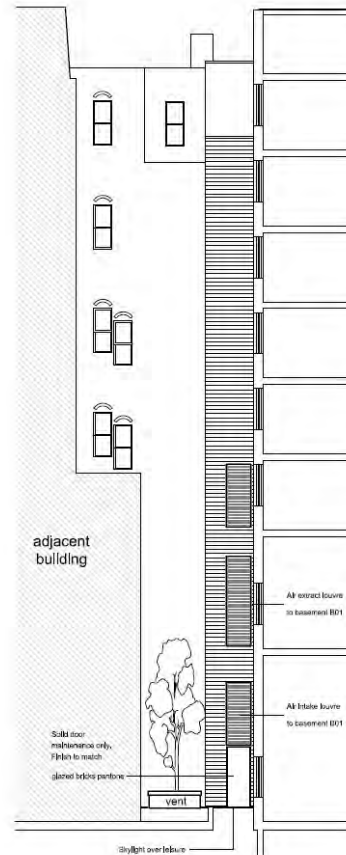
# Creed Court Hotel

We are proposing new windows to the courtyard rooms, But all glass will be opaque glass, to respect the neighbours privacy.

We are proposing new windows to the courtyard rooms, But all glass will be opaque glass, to respect the neighbours privacy.

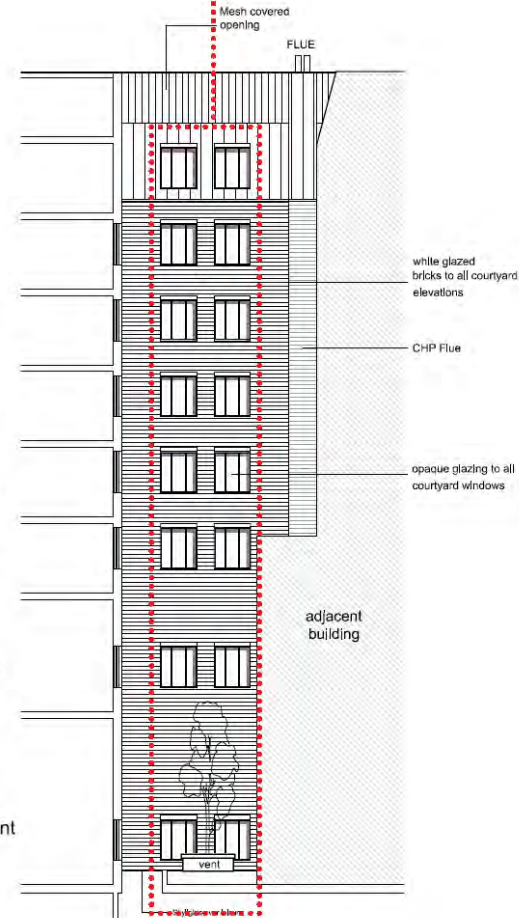


Courtyard Elevation AA'



Courtyard Elevation BB'

Plant  
Level 6  
Level 5  
Level 4  
Level 3  
Level 2  
Level 1  
Ground Level  
Basement B01  
Basement B02



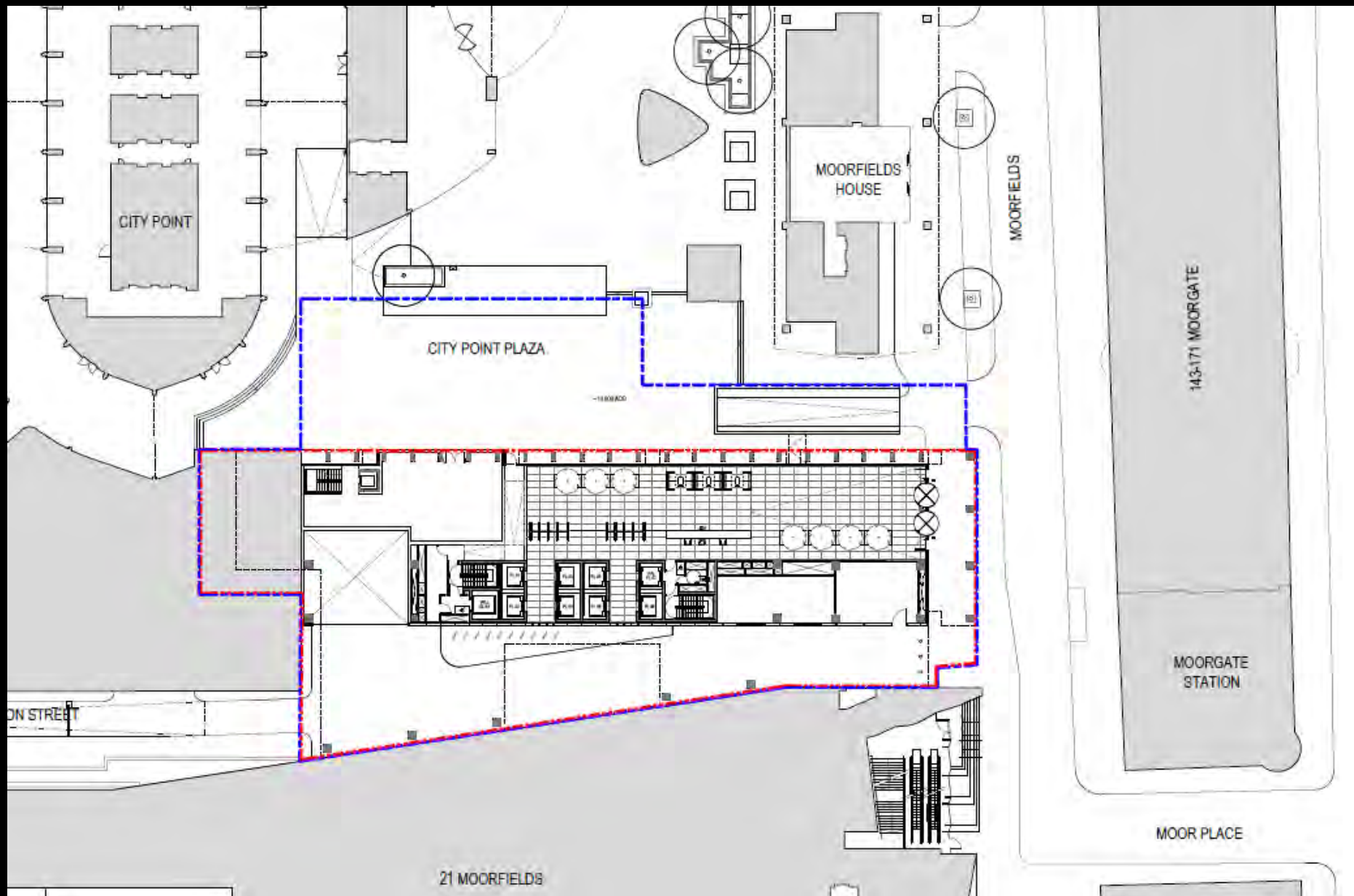
Courtyard Elevation CC'

Proposed internal courtyard elevations





# 45 Moorfields



Site location plan



# 45 Moorfields



Existing Building Photos

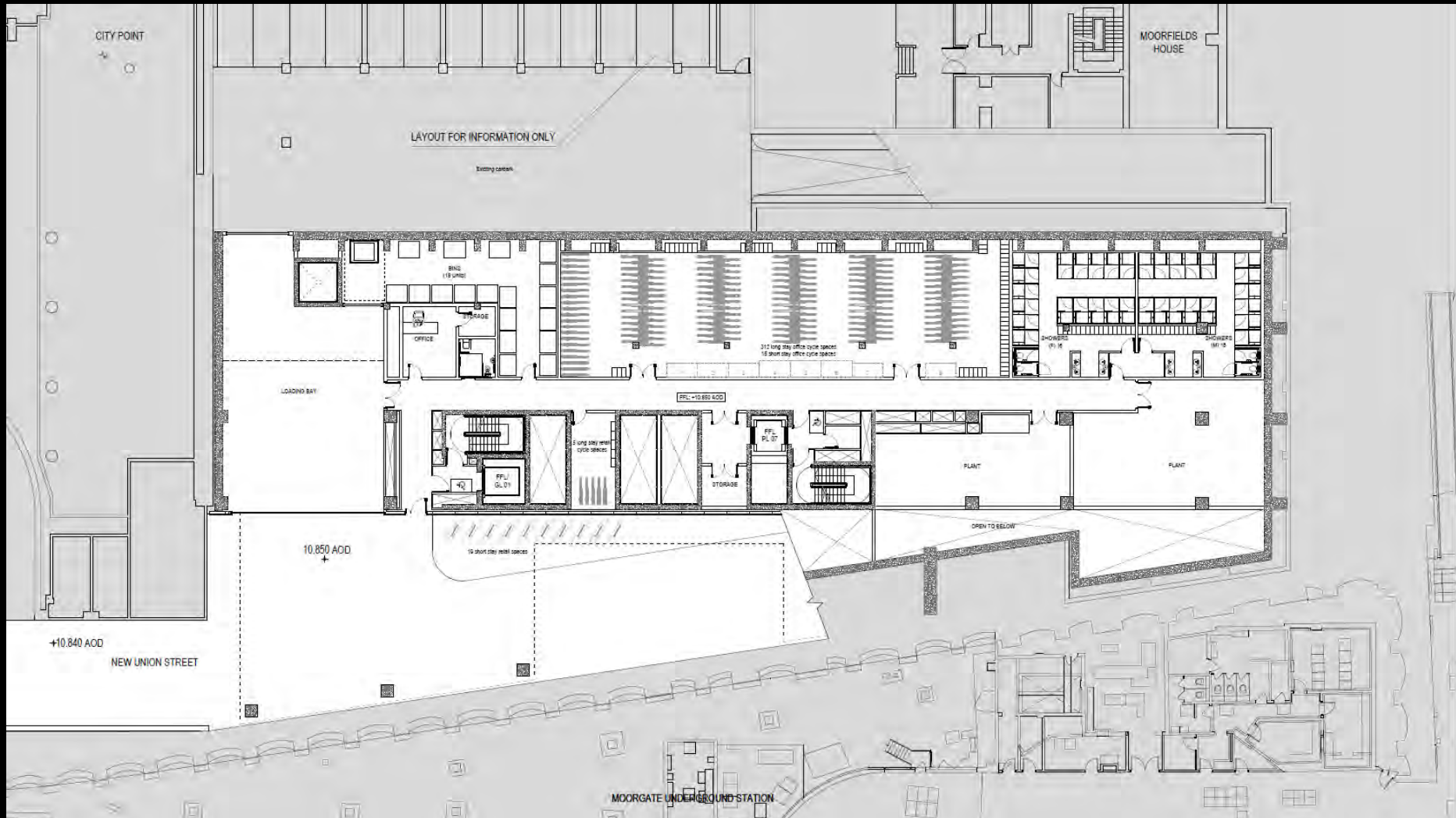
# 45 Moorfields



Proposed Ground Floor - P0200

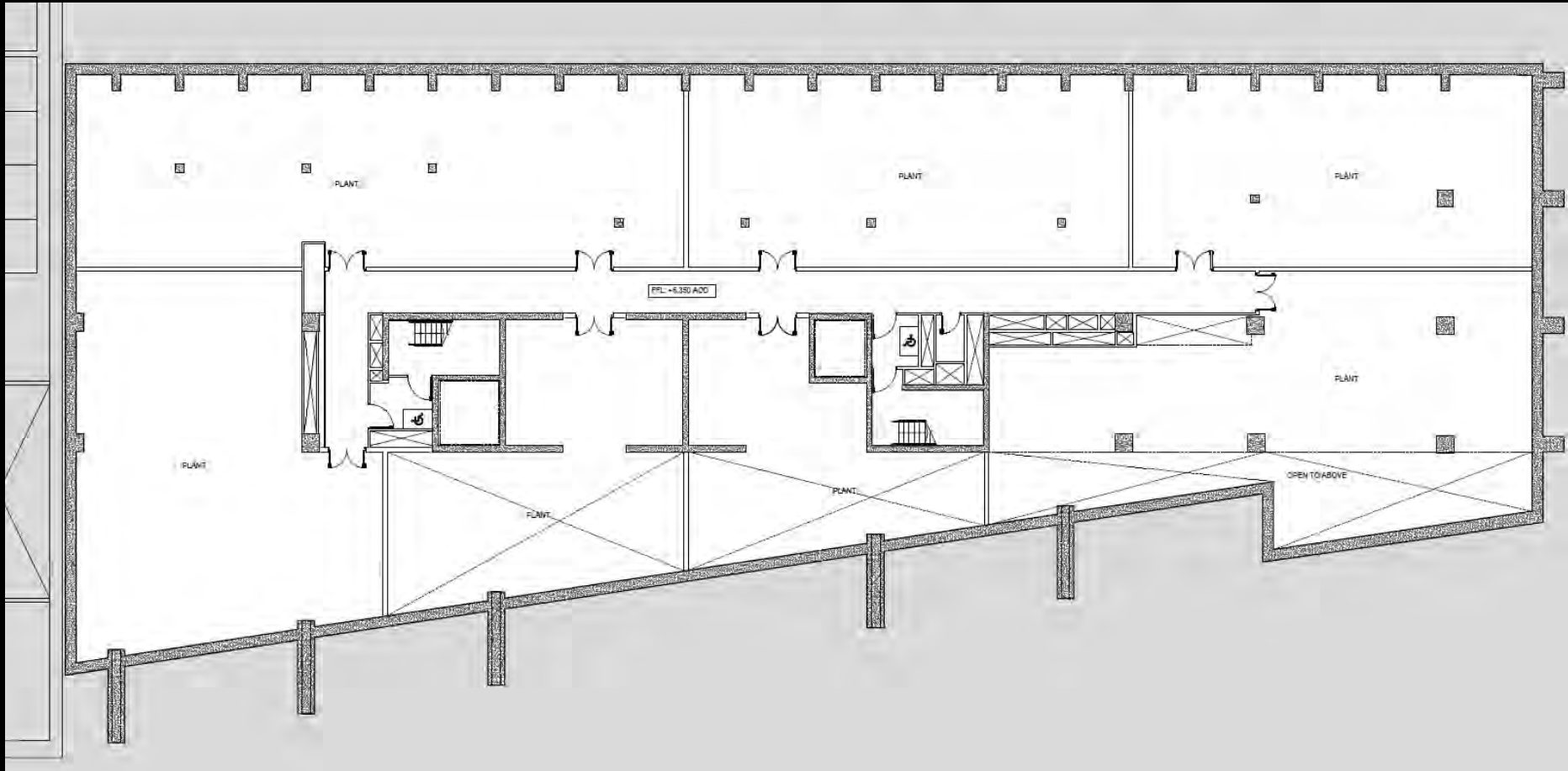


# 45 Moorfields





# 45 Moorfields



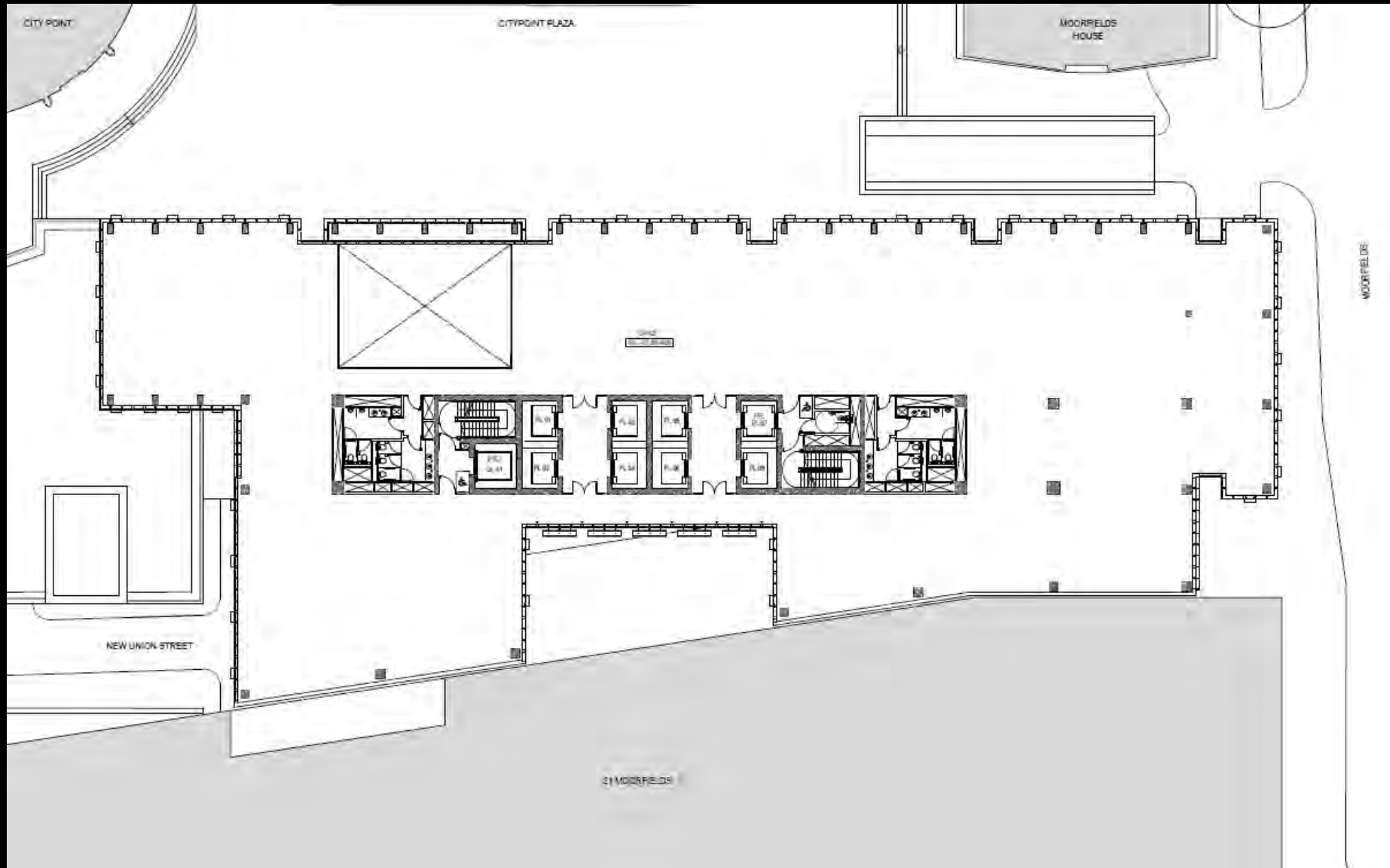
Basement Level 02 - P0198

# 45 Moorfields



Proposed Level 1 - Drawing P0201 Rev A - Double Height Office Lobby and Upper Floor Retail Unit

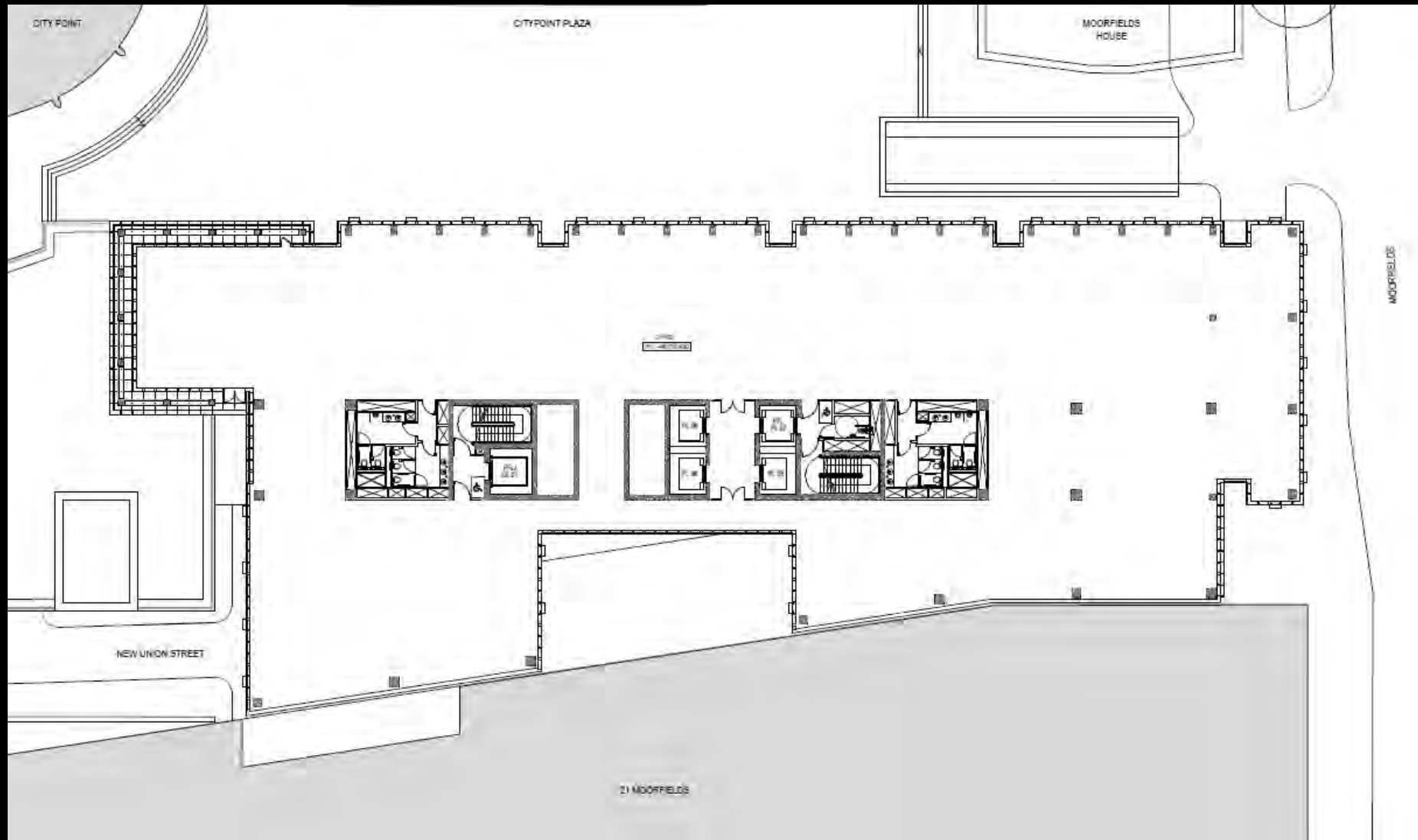
# 45 Moorfields



Typical floorplan Level 2-8 - Drawing P0206 Rev A

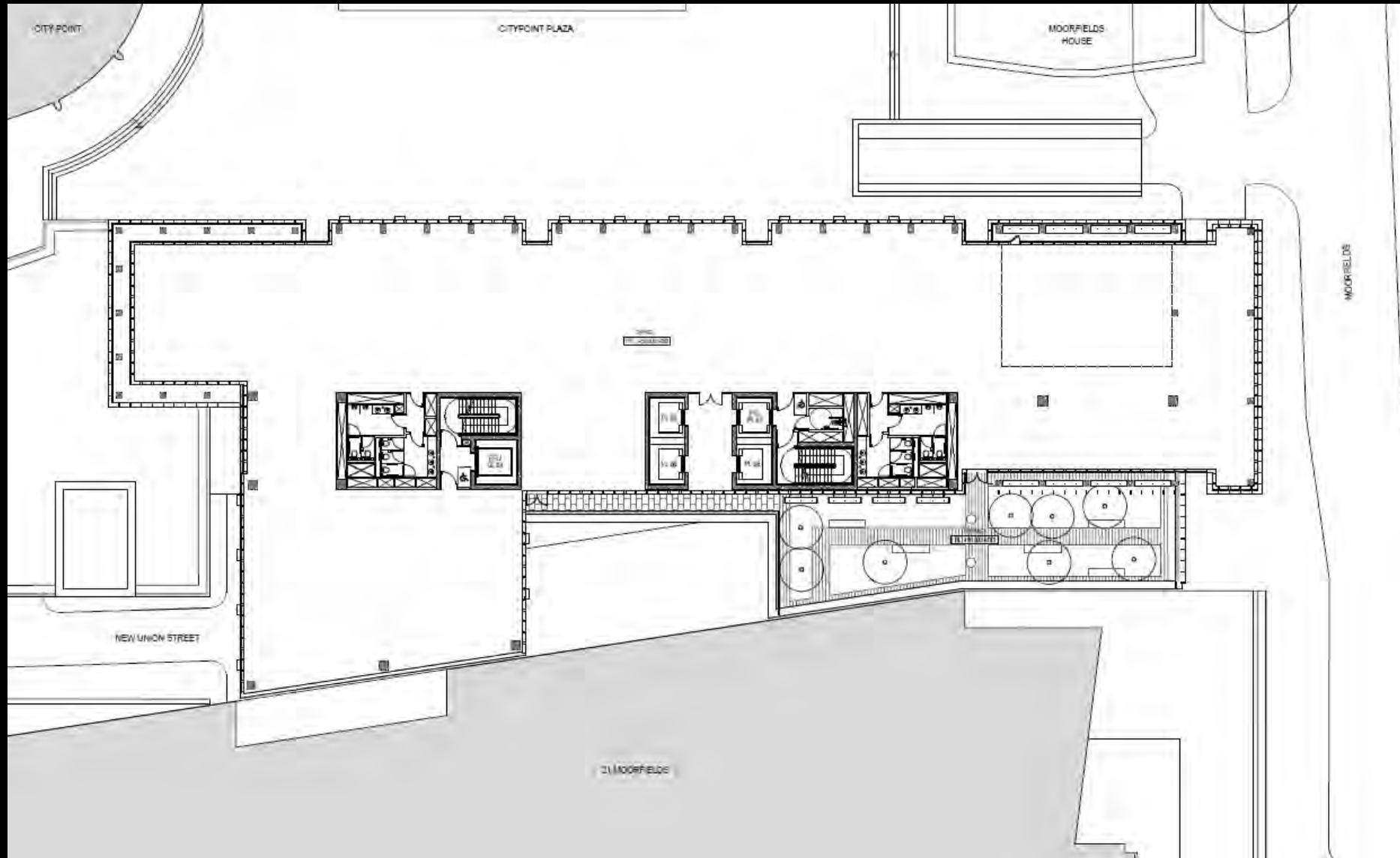


# 45 Moorfields



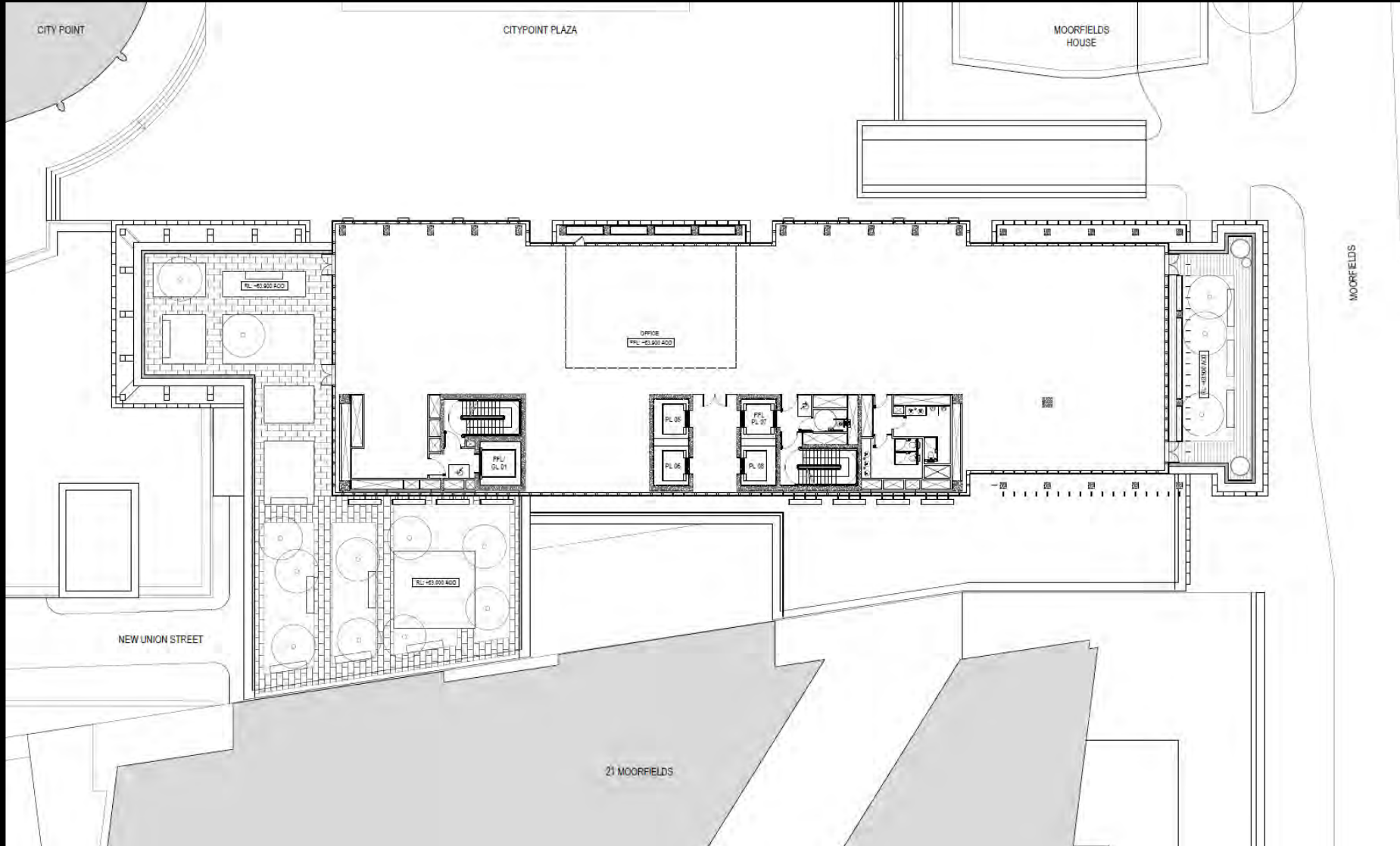
Typical Floor Plan Levels 9 and 10 – Drawing Number – P0209 Rev A– This is where the building starts setting back on the western side

# 45 Moorfields



Typical Floor Plan Levels 11 and 12 - Drawing Number PO211 Rev A - this is where there is one external terrace

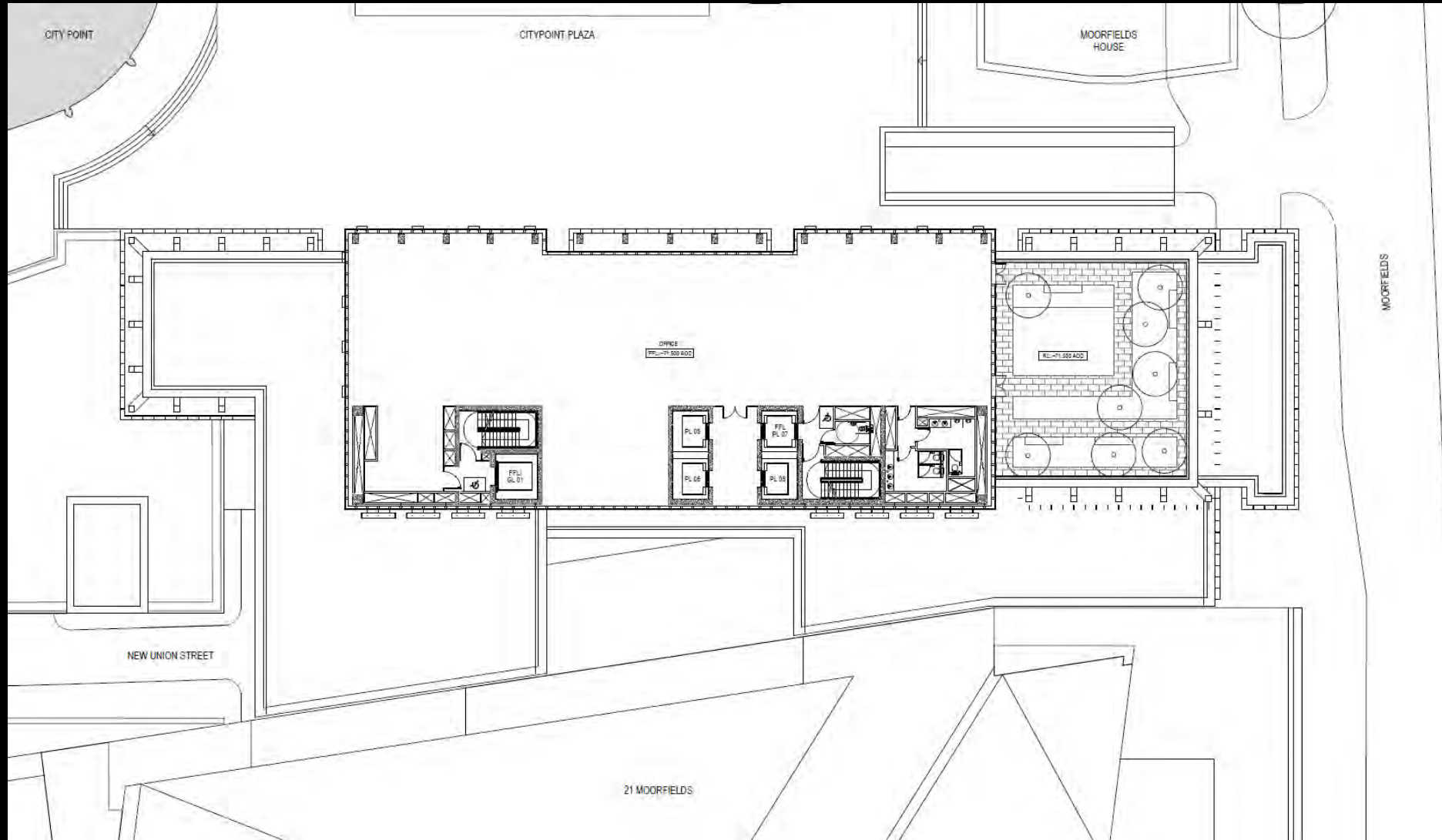
# 45 Moorfields



Typical Floor Plan Levels 13 and 14 - Drawing Number P0213 Rev A - this is where there are two external terraces on L13



# 45 Moorfields



Typical Floor Plan Levels 15-16 – Drawing Number – P215 RevA – this is where there one external terraces on L15

Architectural floor plan of 21 Moorfields, showing a complex layout of rooms, corridors, and structural elements. The plan includes labels for 'CITY POINT PLAZA', 'MOORFIELDS HOUSE', 'NEW UNION STREET', and '21 MOORFIELDS'. It features various rooms such as 'TO CORRIDOR', 'TO STAIRS', and 'TO LIFT', along with structural details like 'TO BE REMOVED' and 'TO BE ADDED'.

Roof Plan - drawing P0219 RevA - you can see the BMU and the roof terraces at various levels

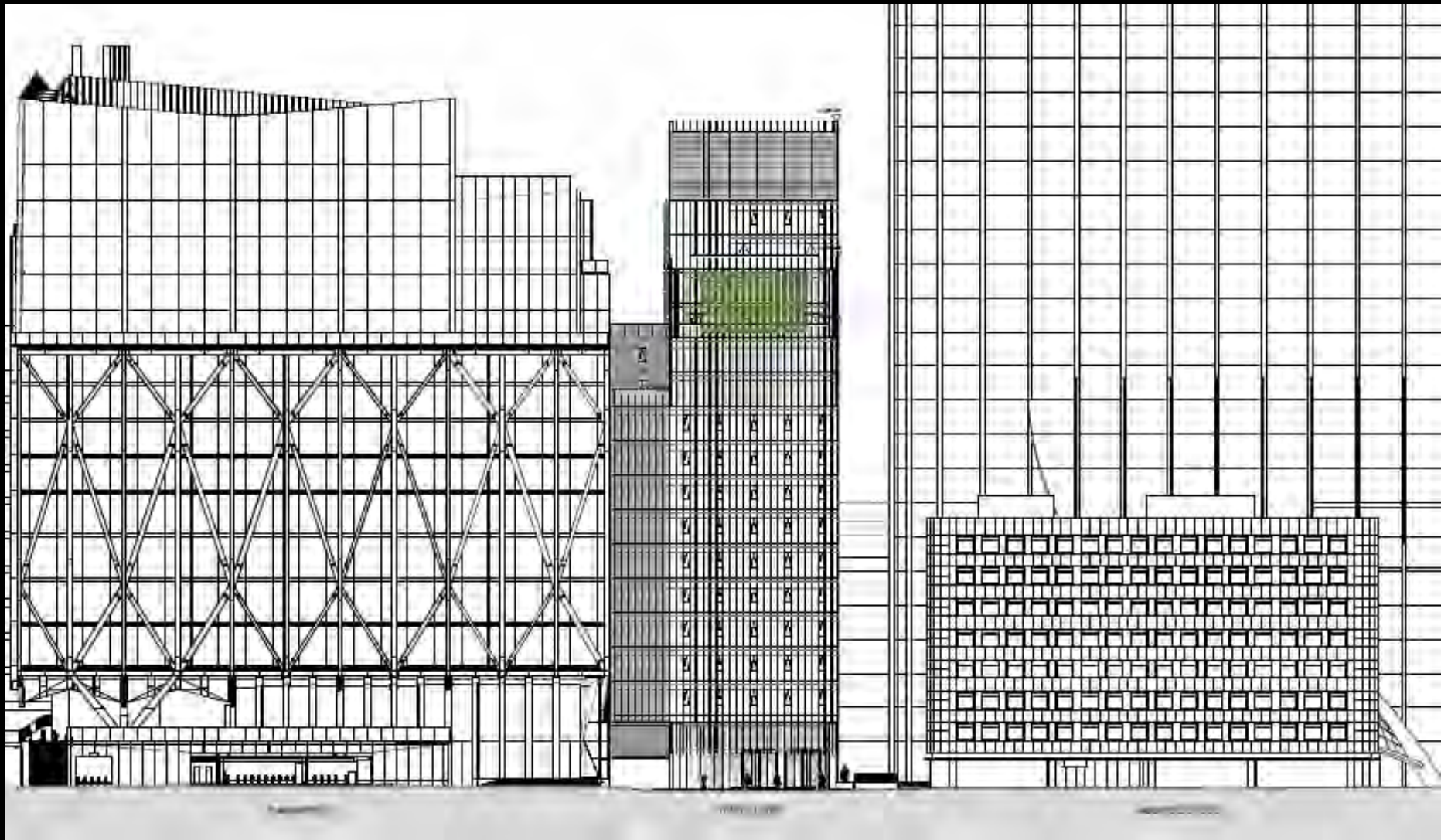
# 45 Moorfields



North Elevation in Context PO310

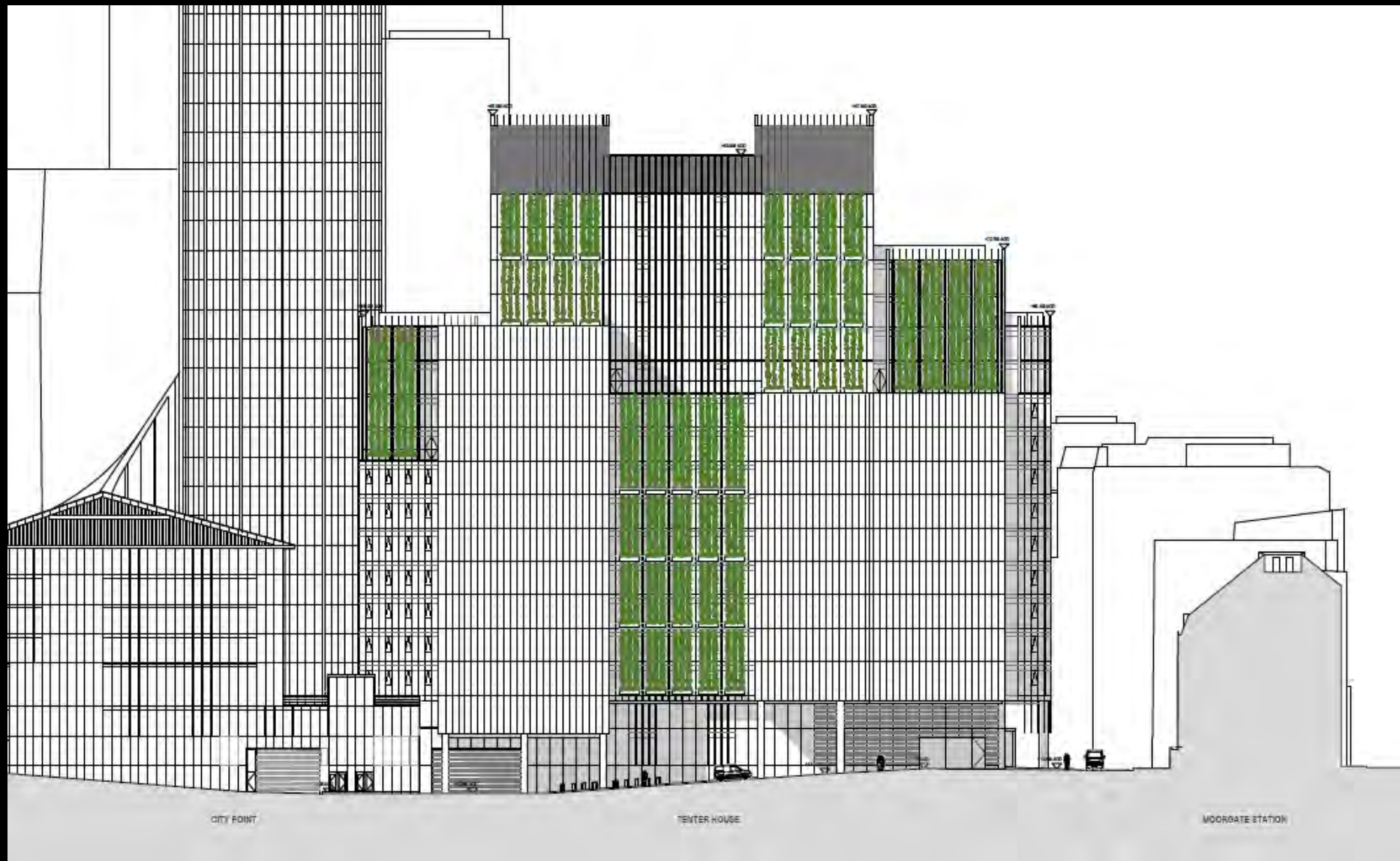


# 45 Moorfields



Moorfields Elevation (East Elevation) – P0311 RevA

# 45 Moorfields



South Elevation - PD312 Rev A



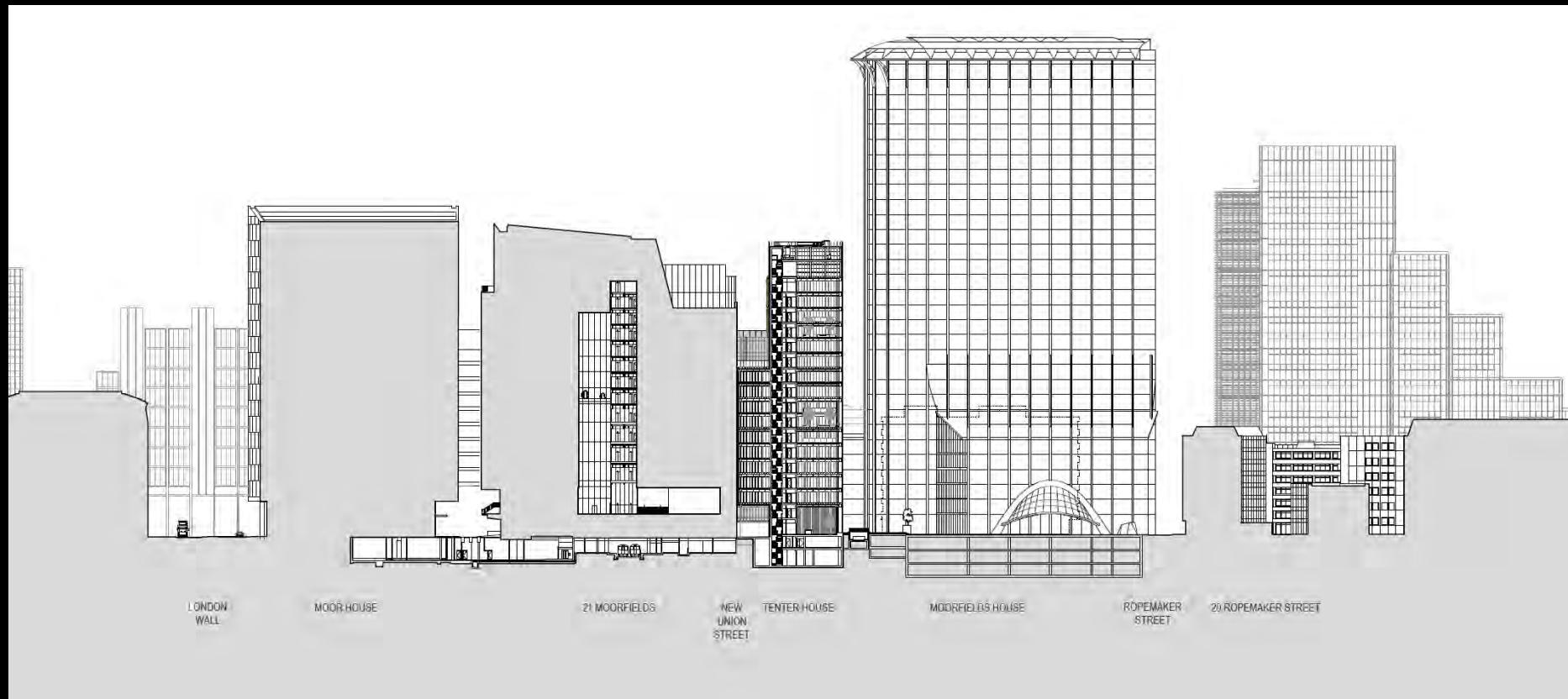
# 45 Moorfields



West Elevation - P0313 Rev A



# 21 Moorfields



North-South Section Through the Site (Drawing Number Section BB in Context – P0401 Rev A)

# 45 Moorfields



View of existing building from Ropemaker Street looking South – View Point 11



# 45 Moorfields



View of proposed building from Ropemaker Street looking South – View Point II



## 45 Moorfields



View of existing and proposed building from Moorfields – View Point 16

## 45 Moorfields



View of existing building from Willoughby House – View Point 5



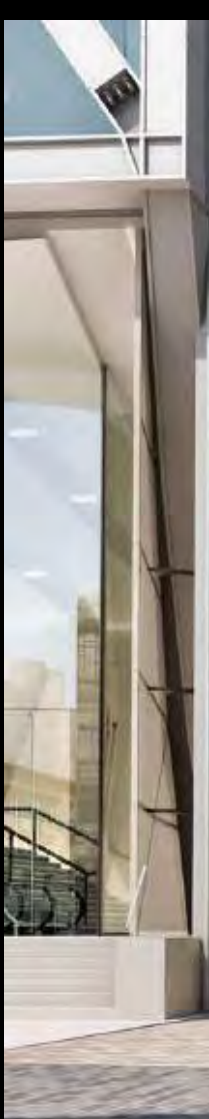
# 45 Moorfields



View of proposed building from Willoughby House – View Point 5



# 45 Moorfields



Proposed view of New Union Street looking West – Add View Point 15 Proposed Version

# 45 Moorfields



## Servicing Strategy



# 45 Moorfields



Open garden terrace



Woodland garden terrace



Outdoor room terrace



Greening on roof terraces



# 45 Moorfields



Aerial view of proposed building looking south west

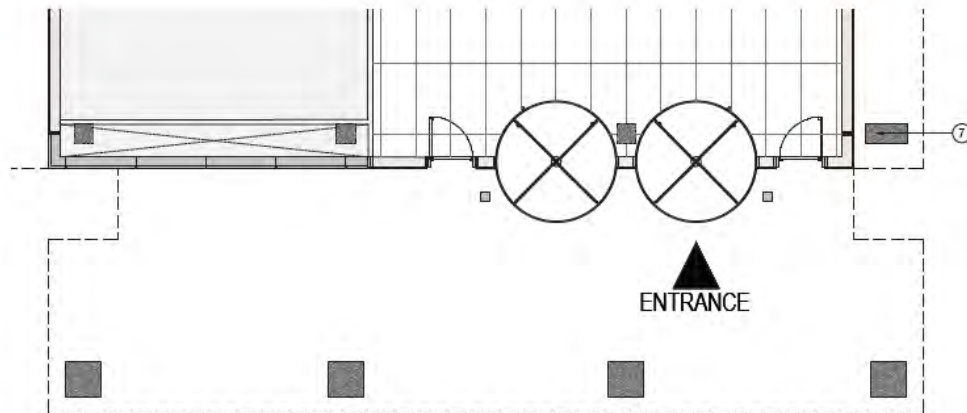
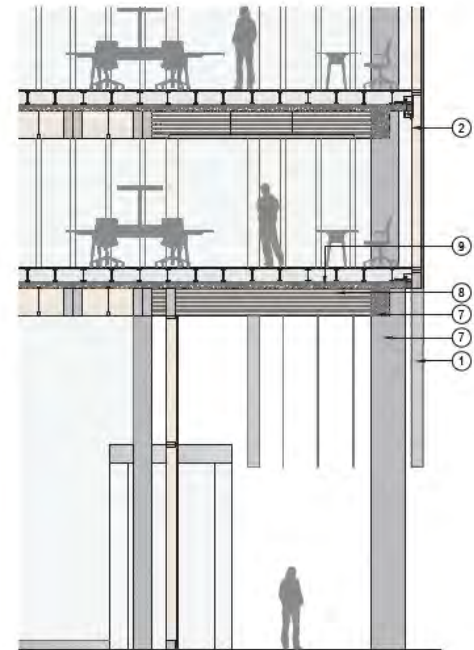
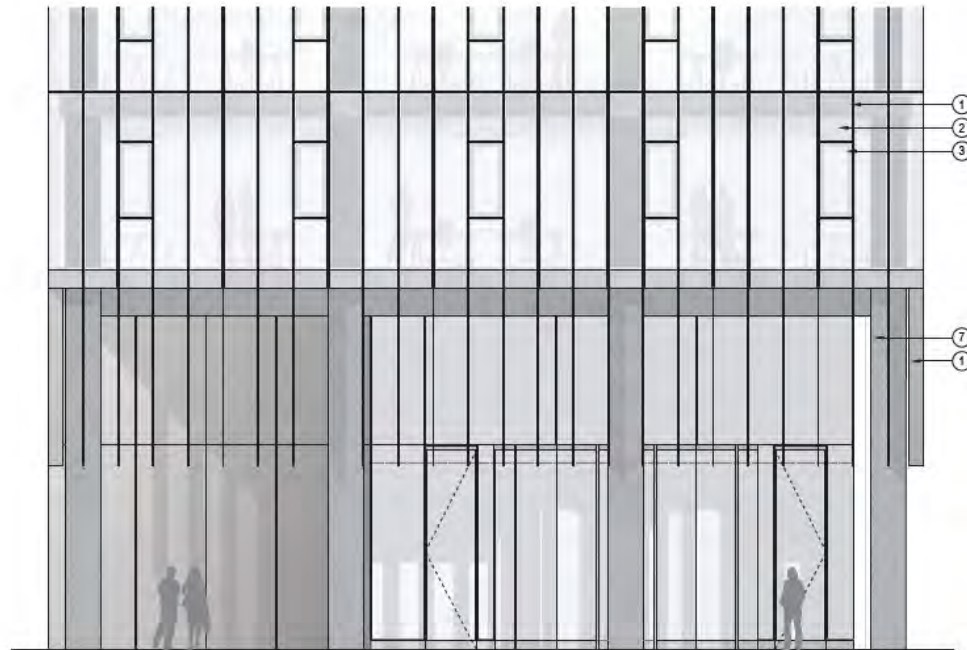
# 45 Moorfields



## Façade Design



# 45 Moorfields

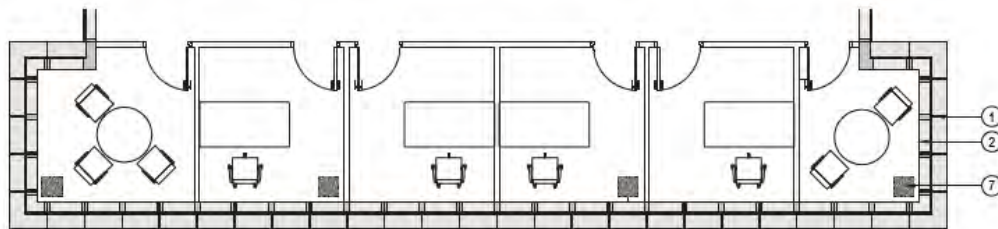
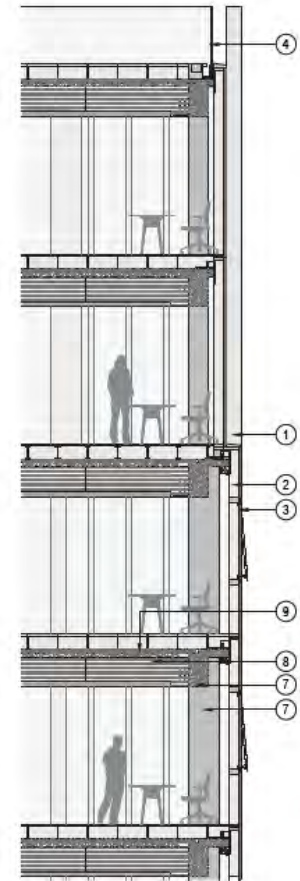
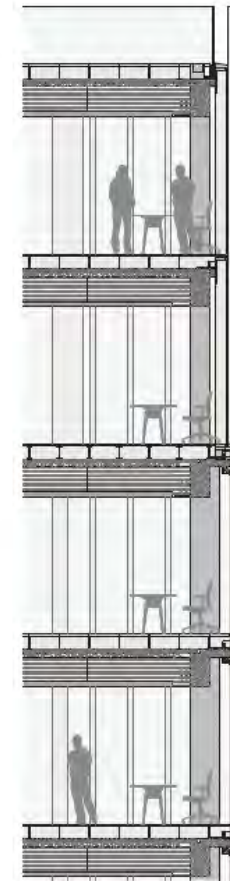
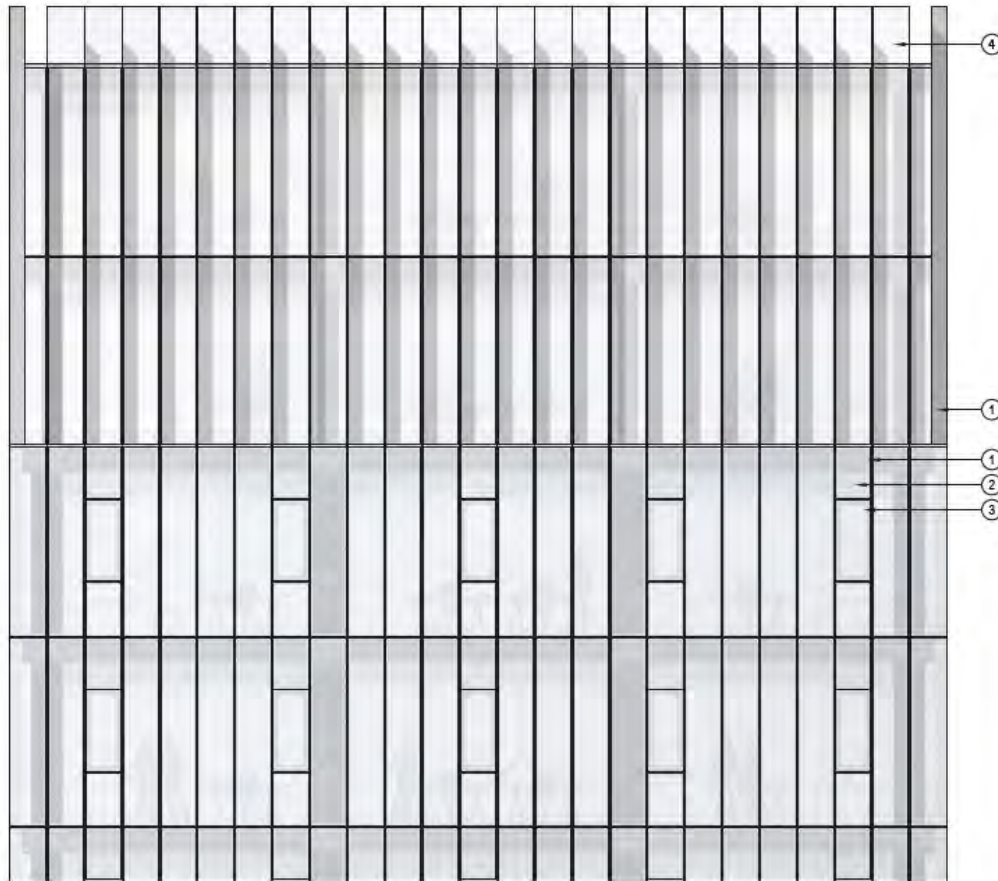


## Key to Materials

1. Anodised aluminium frame w/satin stainless steel finish
2. Untreated timber cladding panel with structurally glazed, high performance clear glazing
3. Top-hung, outward opening window
4. Clear frameless laminated glass balustrade
5. Satin stainless steel planter
6. Stainless steel trellis support to vertical planting
7. Exposed structural pre-cast concrete column and beam
8. Exposed glulam timber beam
9. In-situ concrete slab



# 45 Moorfields



## Key to Materials

1. Anodised aluminium fine waist stainless steel finish
2. Untreated timber cladding panel with structurally glazed high performance clear glazing
3. Top-hung, outward opening window
4. Clear frameless laminated glass balustrade
5. Satin stainless steel planter
6. Stainless steel trellis support to vertical planting
7. Exposed structural pre-cast concrete column and beam
8. Exposed glulam timber beam
9. In-situ concrete slab

# 45 Moorfields



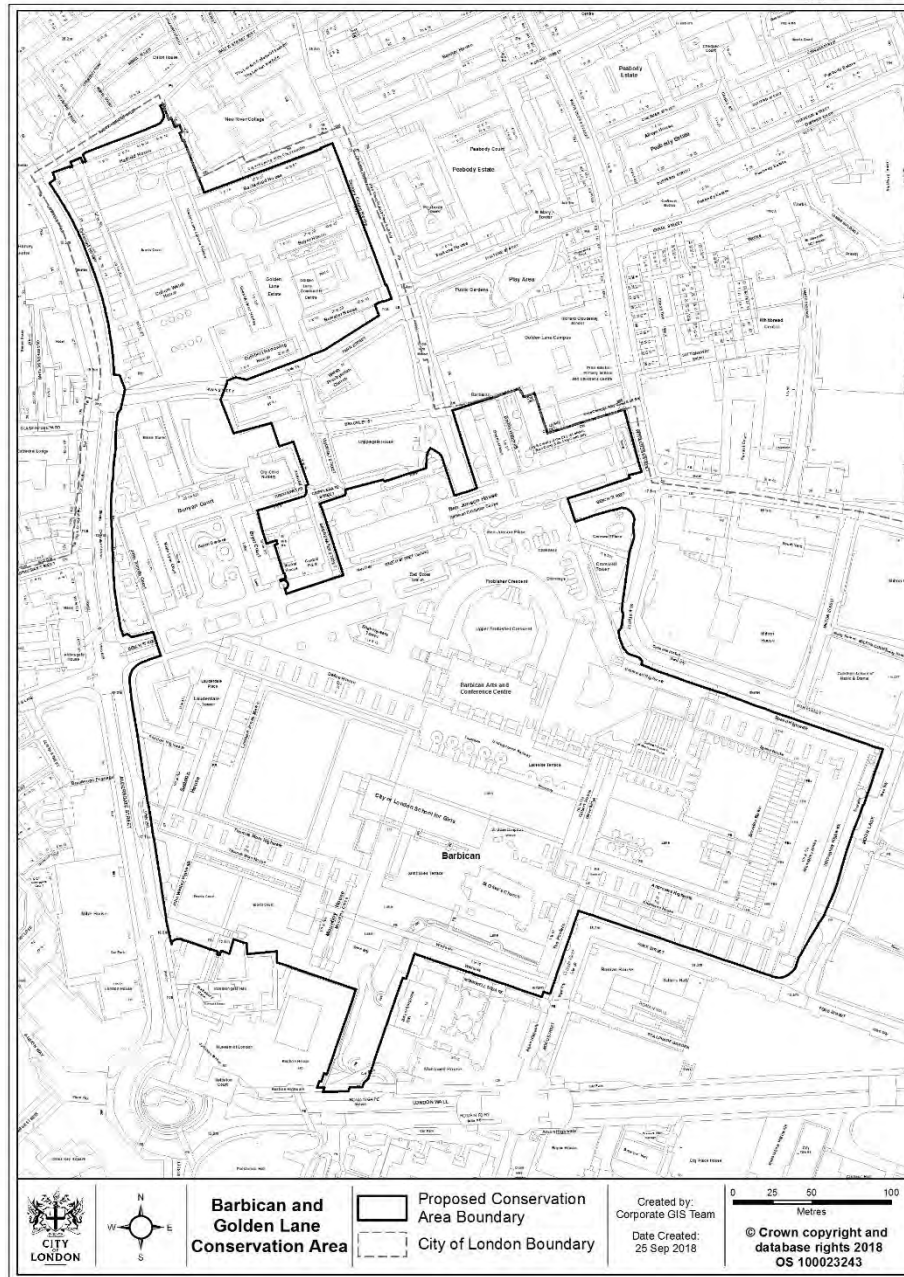






# Barbican and Golden Lane – Proposed Conservation Area

## Appendix 1



# Planning & Transportation Next Committee

30<sup>th</sup> October 2018